

# UMC Benchmark Data (Fall 2001)

Compiled by

Ashok Saxena

School of Materials Science and Engineering

Georgia Institute of Technology

E-mail: [ashok.saxena@mse.gatech.edu](mailto:ashok.saxena@mse.gatech.edu)

Presented at the Spring UMC Meeting

May 20, 2002

# UMC 2001 Benchmark Data

## Institutions Participating in Survey

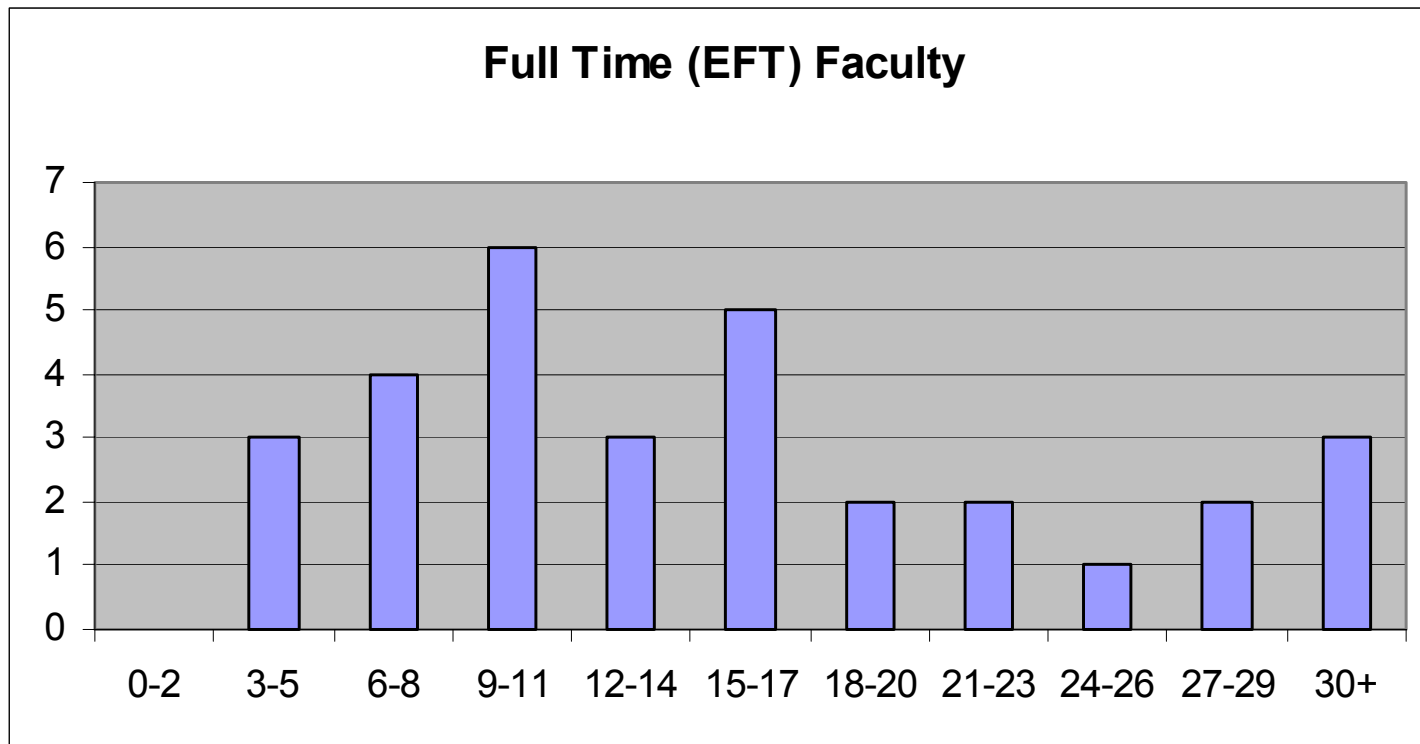
Arizona State University  
Auburn University  
University of California, LA  
Carnegie Mellon University  
Colorado School of Mines  
Cornell University  
University of Delaware  
University of Florida  
Georgia Institute of Technology  
Illinois Institute of Technology  
University of Illinois  
Iowa State University  
Johns Hopkins University  
Lehigh University  
University of Maryland  
McMaster University  
Michigan Technological University

University of Michigan  
University of Minnesota  
Montana Tech  
New York State College of Ceramics at Alfred  
University  
Northwestern University  
Penn State University  
Purdue University  
The Ohio State University  
University of Pennsylvania  
Rensselaer Polytechnic Institute  
Rutgers The State University of New Jersey  
South Dakota School of Mines and Technology  
Stevens Institute of Technology  
University of Texas at Austin  
University of Virginia  
University of Washington  
Wright State University

# UMC 2001 Benchmark Data

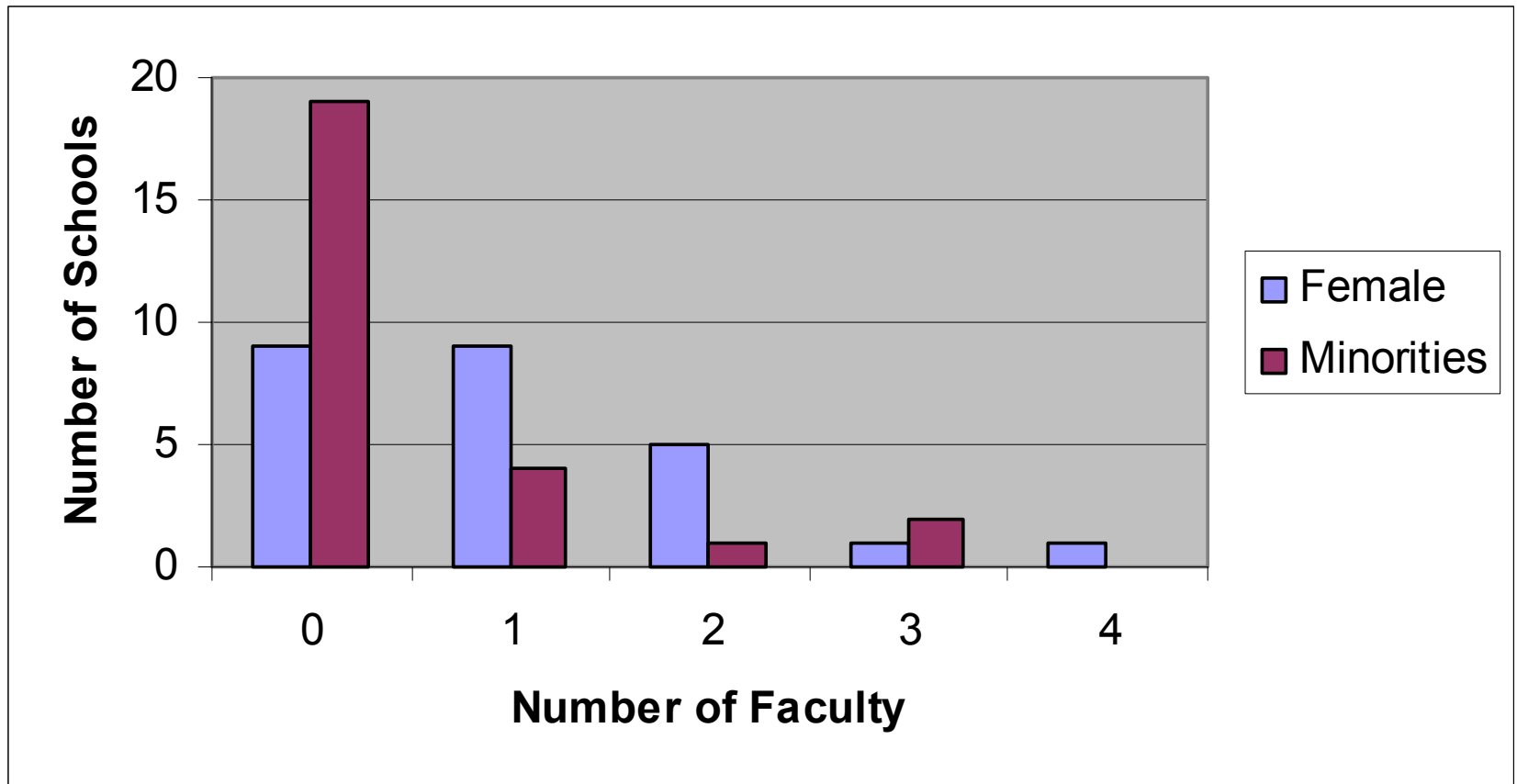
Full Time Faculty in MSE programs – 32 Programs Reporting

**Average Faculty size = 15.7; No. of Assistant Professors:73; No. of Associate Professors:105; No. of Full Professors:330**



# UMC 2001 Benchmark Data

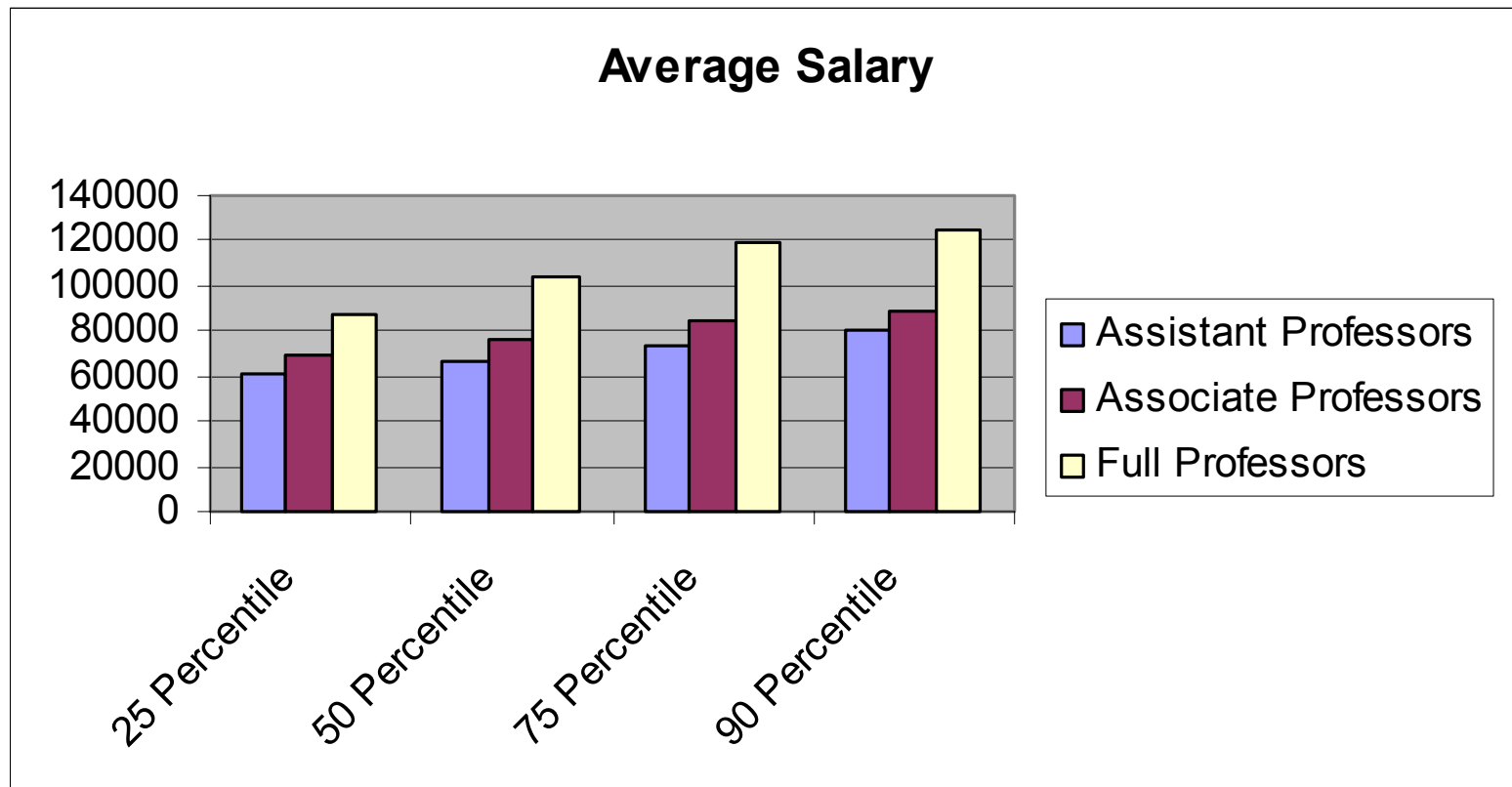
Distribution of Female and Under-represented minority faculty – 27 Programs reporting



# UMC 2001 Benchmark Data

## Distribution of Average Faculty Salaries (32 Institutions Reporting) – Academic Year

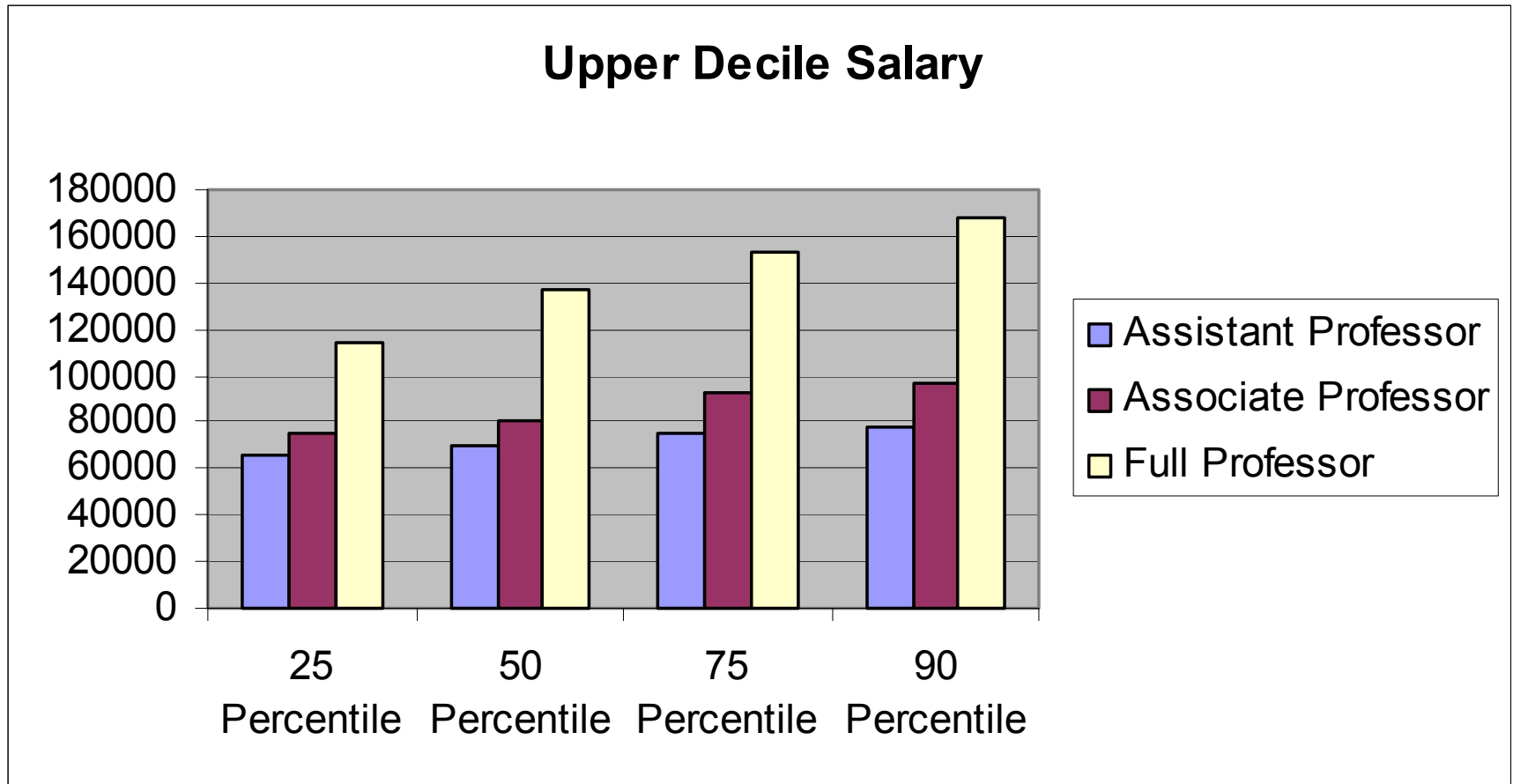
Averages: Assist. Prof. = \$67077/ Assoc. Prof. = \$76743 / Full Prof. = \$103644



# UMC 2001 Benchmark Data

**Distribution of Upper Decile of Faculty Salaries (25 Institutions Reporting)**

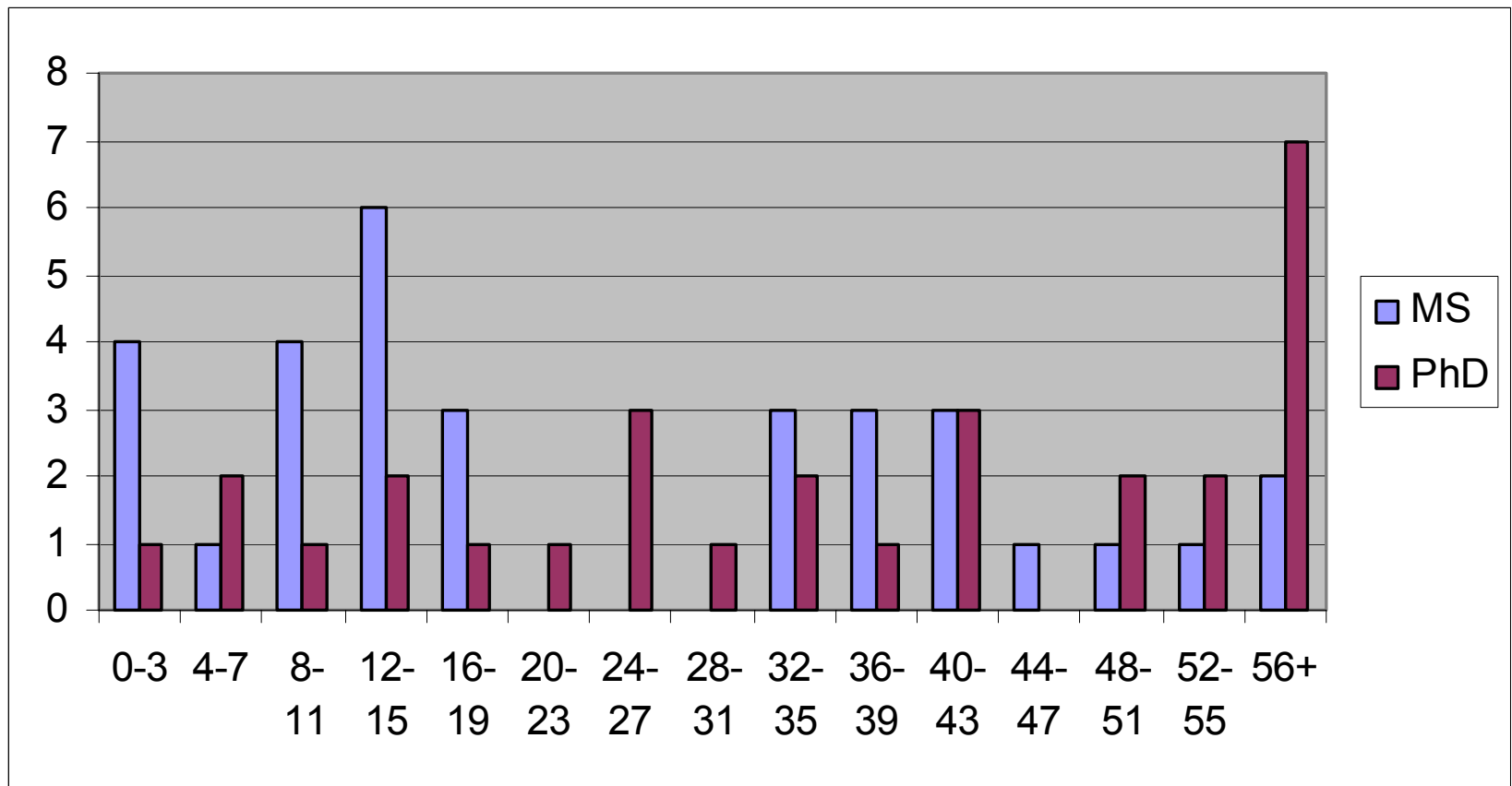
**Academic Year**



# UMC 2001 Benchmark Data

Number of Students by Degree Pursued (32 Institutions)

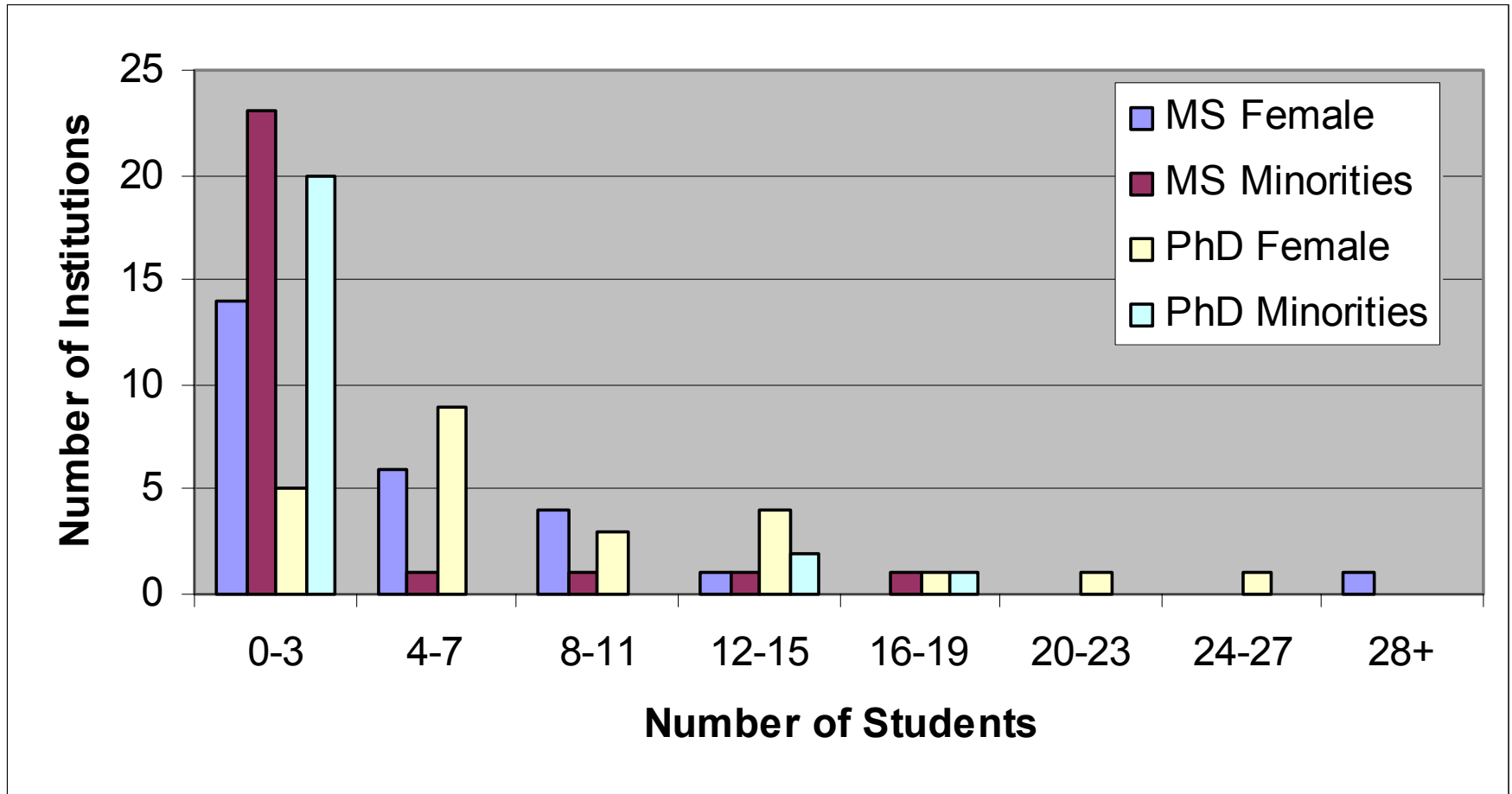
Averages: 24.4 MS / 44 PhD



# UMC 2001 Benchmark Data

Number of female and minority students in MS and PhD Program

Averages: MS Female = 6 / MS Minority = 2 / PhD Female = 9.6 / PhD Minority = 3.5

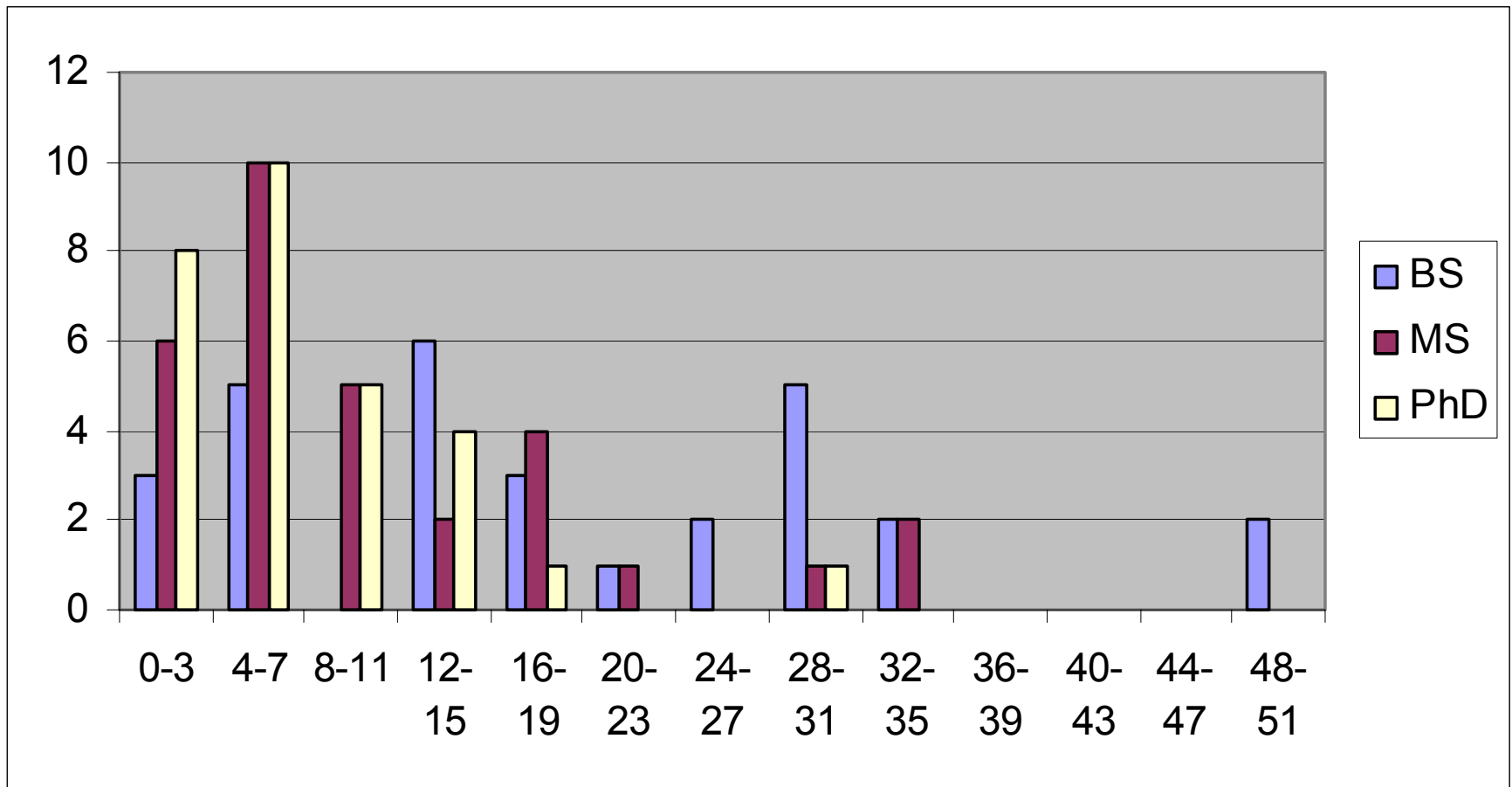




# UMC 2001 Benchmark Data

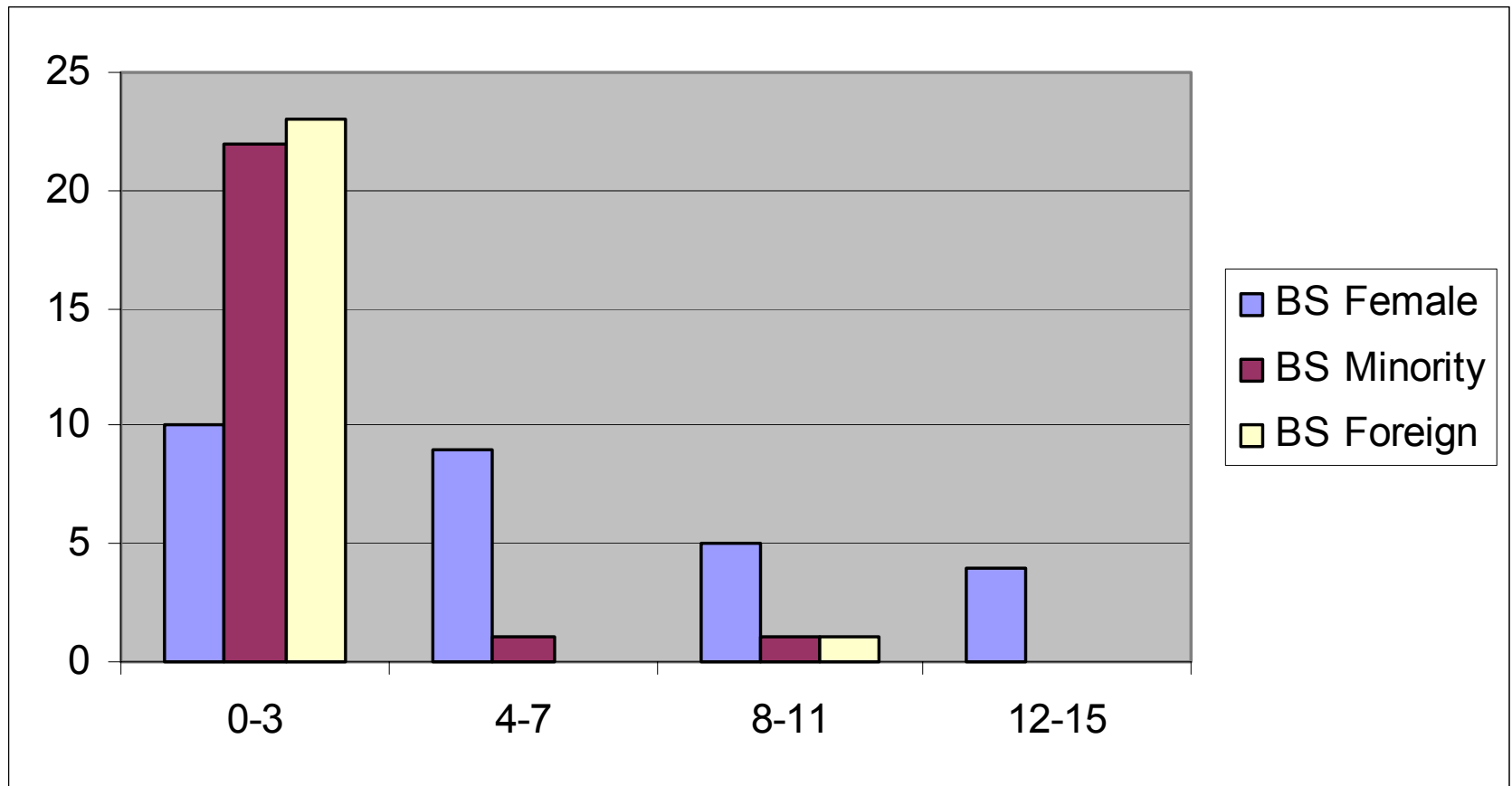
Number of Degrees Awarded

Averages: BS = 19/ MS = 10/ PhD = 8



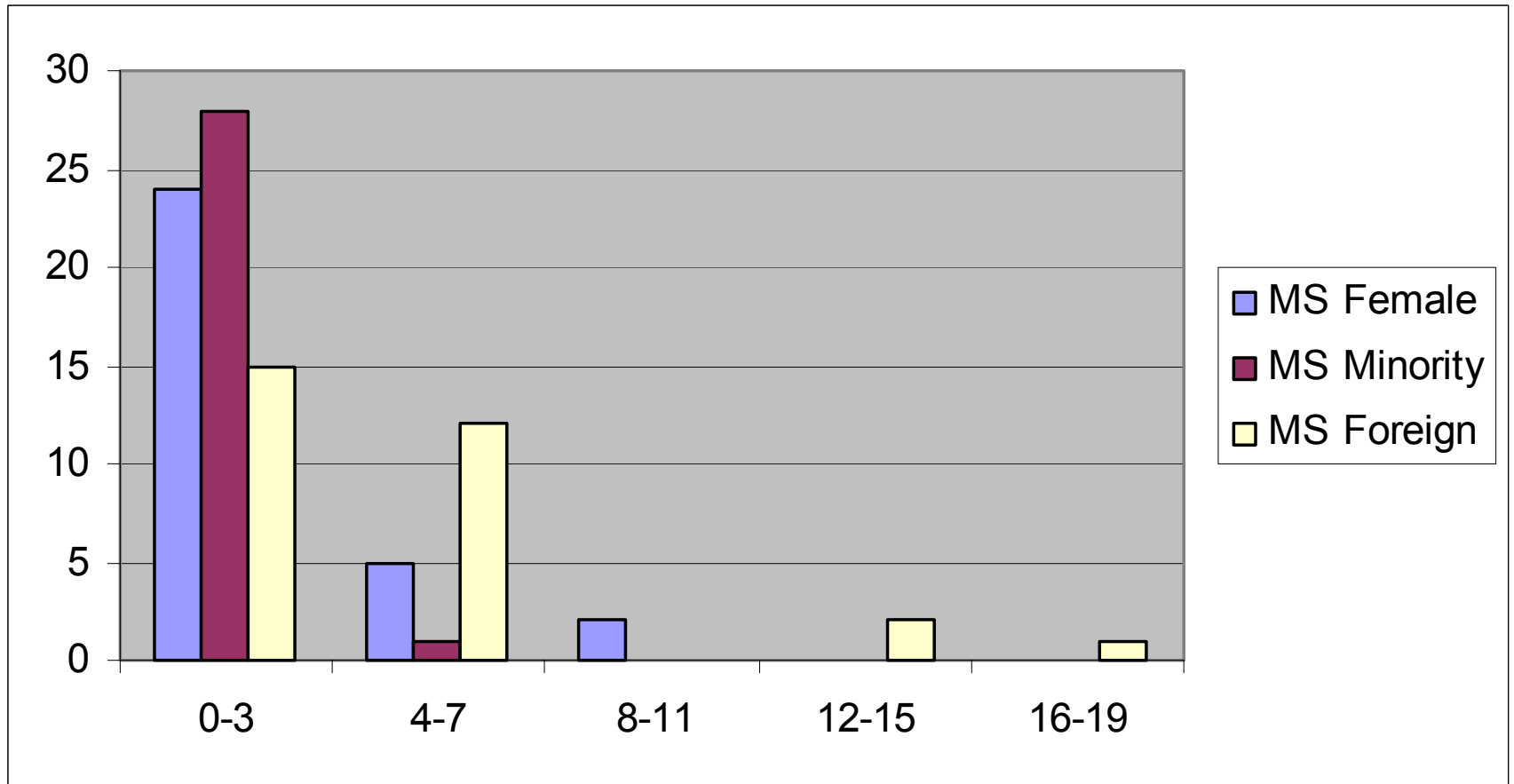
# UMC 2001 Benchmark Data

## Distribution of BS Degrees Awarded



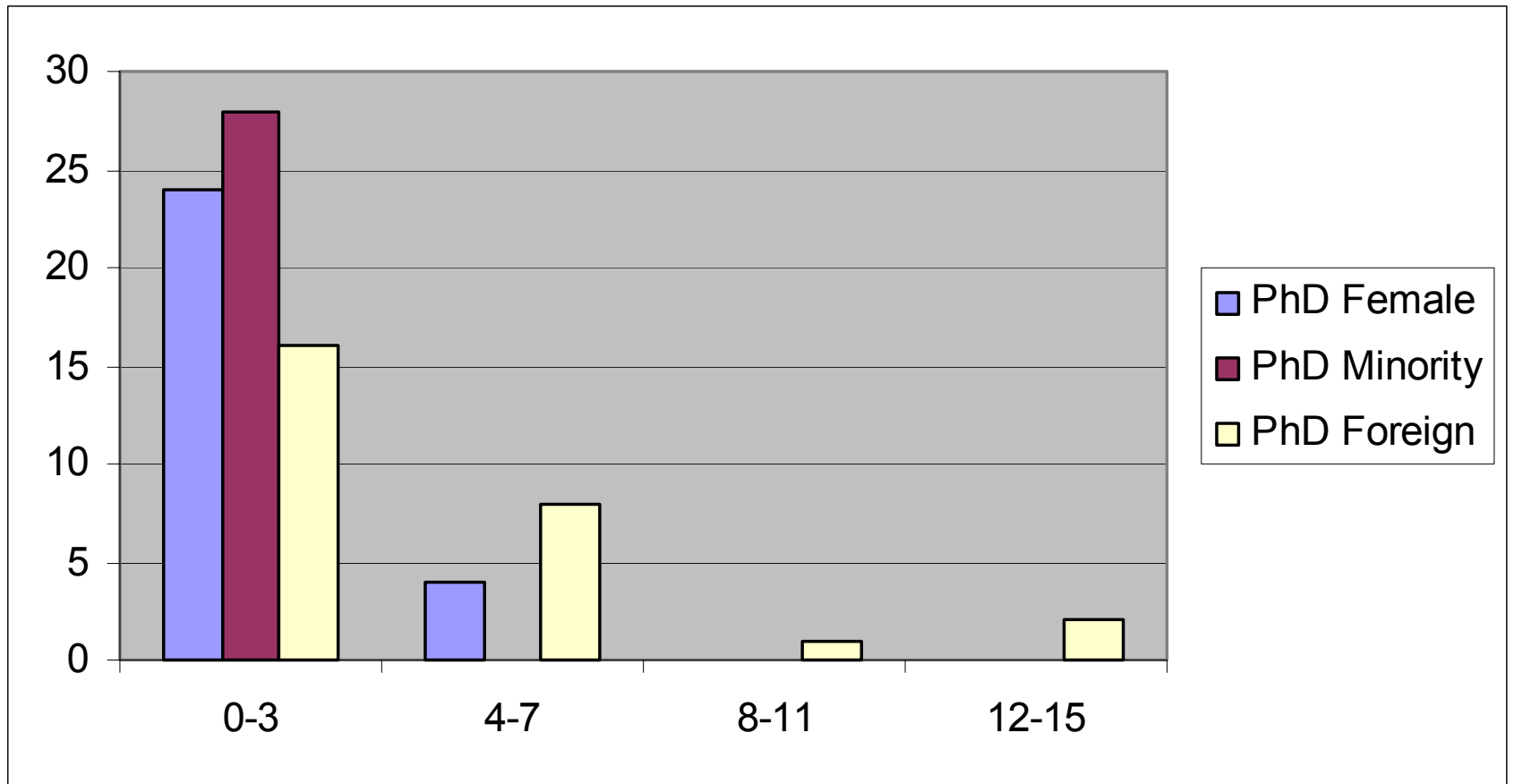
# UMC 2001 Benchmark Data

## Distribution of MS Degrees Awarded



# UMC 2001 Benchmark Data

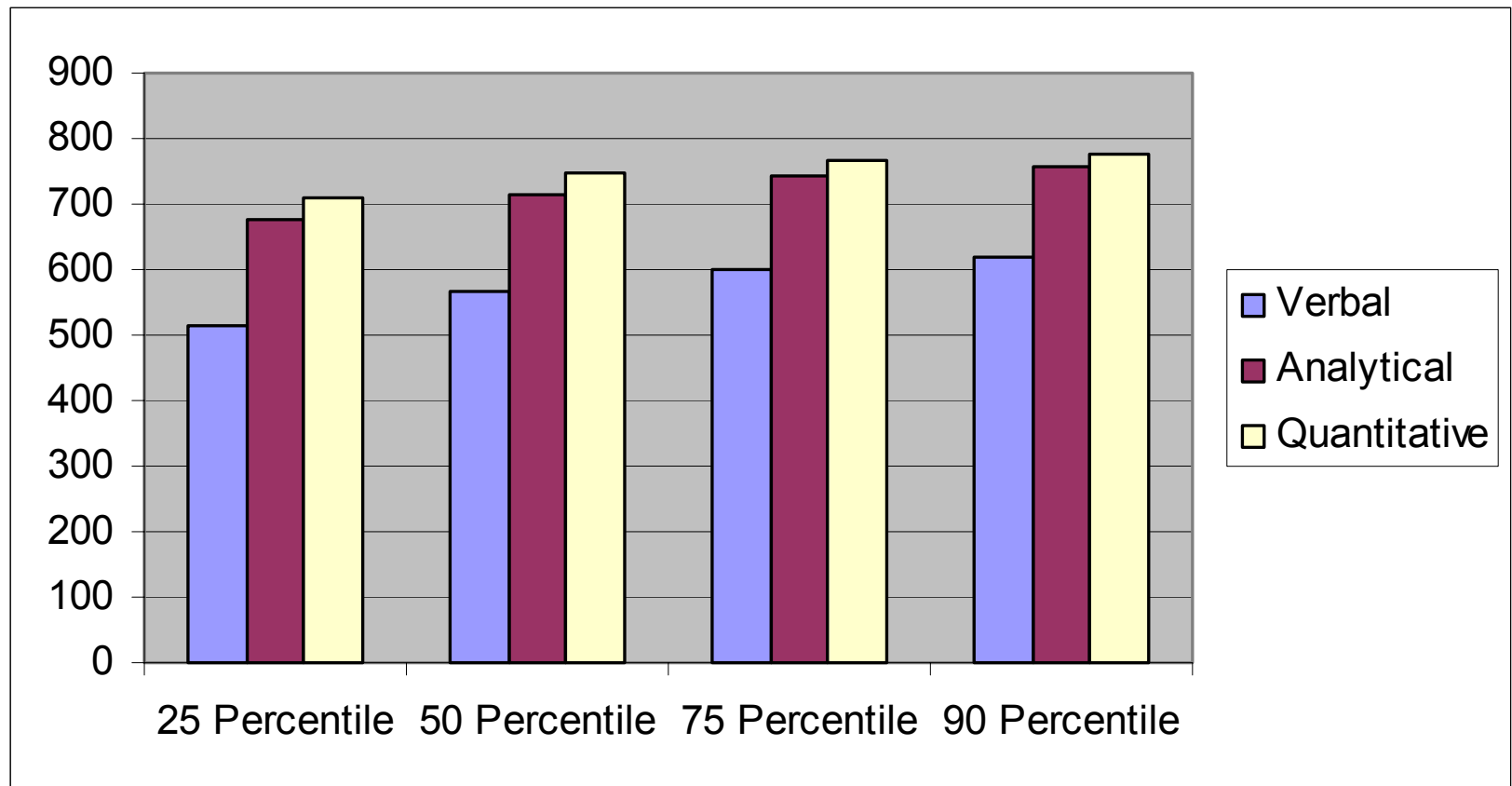
## Distribution of PhD Degrees Awarded



# UMC 2001 Benchmark Data

## GRE Scores

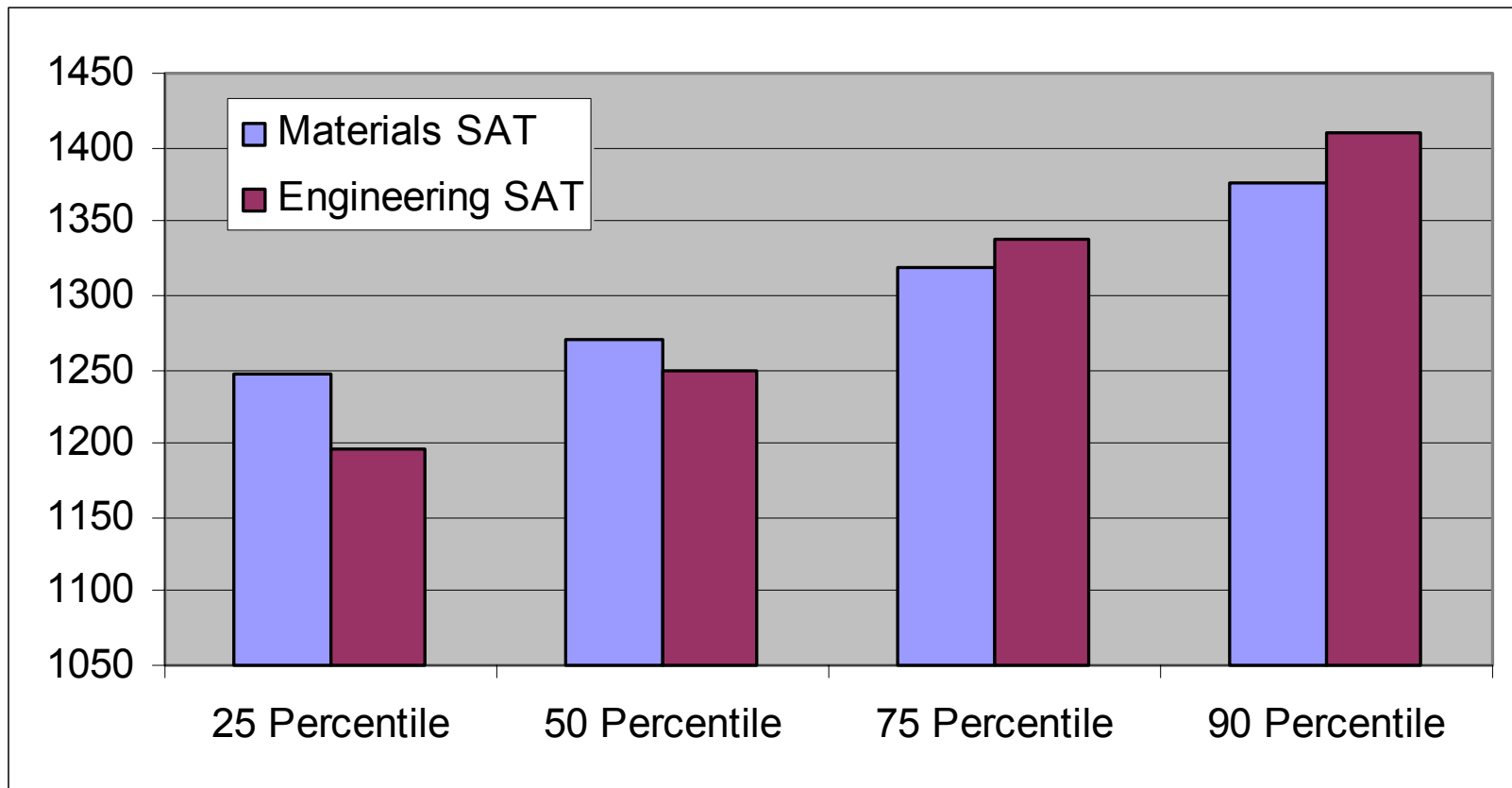
Averages: Verbal = 559 / Analytical = 712 / Quantitative = 725



# UMC 2001 Benchmark Data

## MSE vs. Engineering SAT Scores

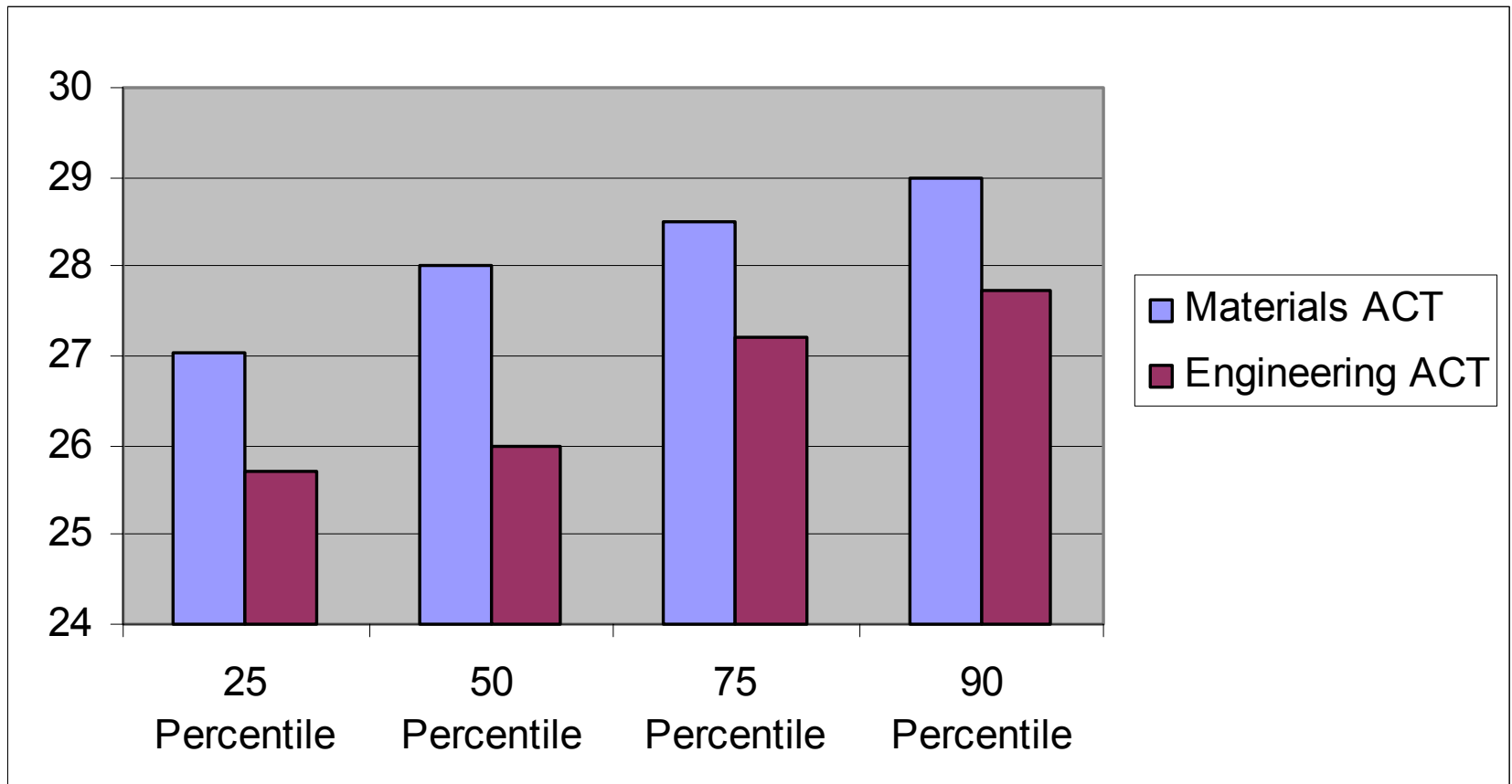
Averages: MSE = 1284.5 / Engineering = 1274.1



# UMC 2001 Benchmark Data

MSE vs. Engineering ACT Scores

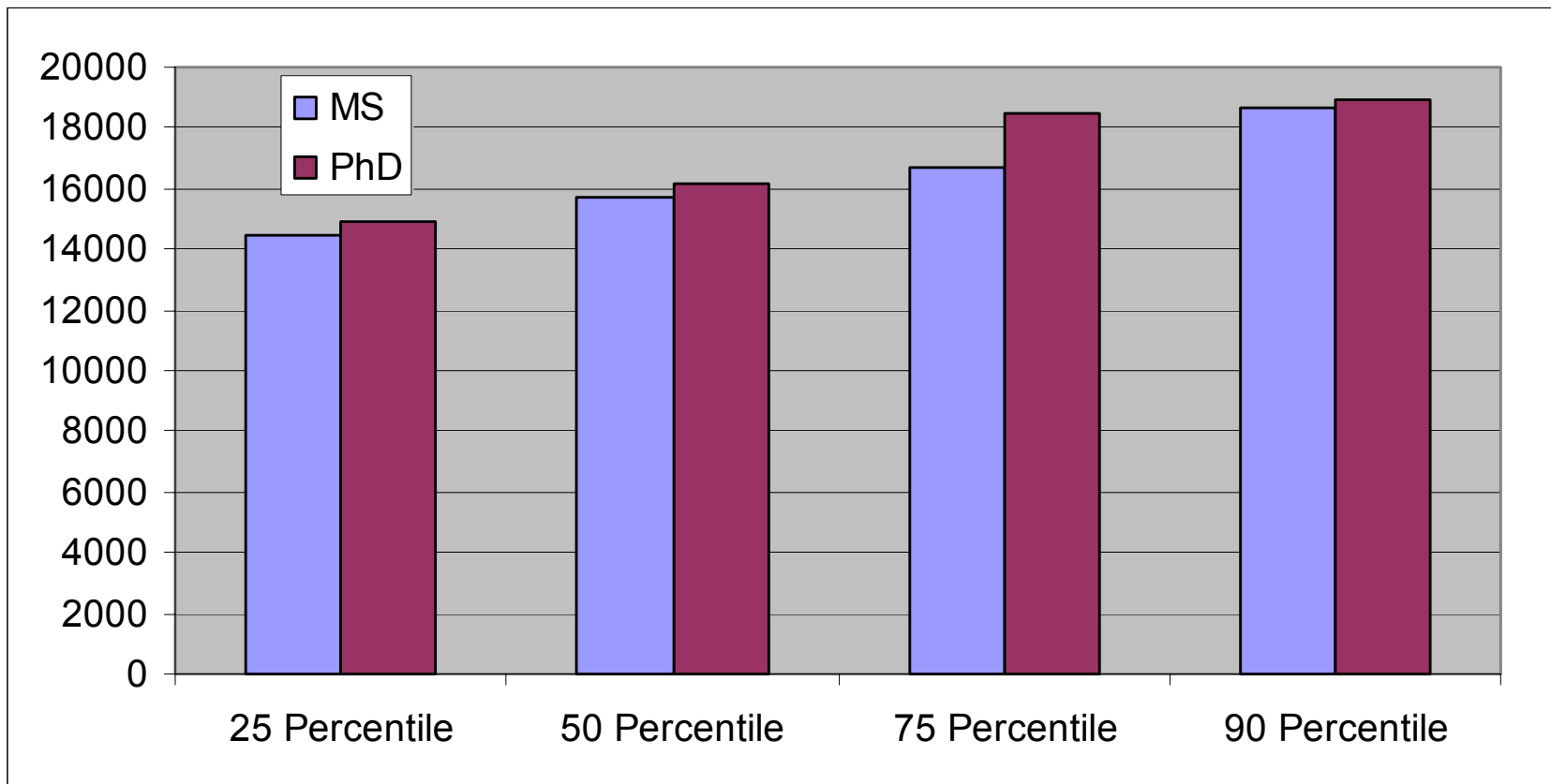
Averages: MSE = 27.8 / Engineering = 26.7



# UMC 2001 Benchmark Data

Stipends for MS and PhD students

Averages: MS = \$15,455 / PhD = \$16,075

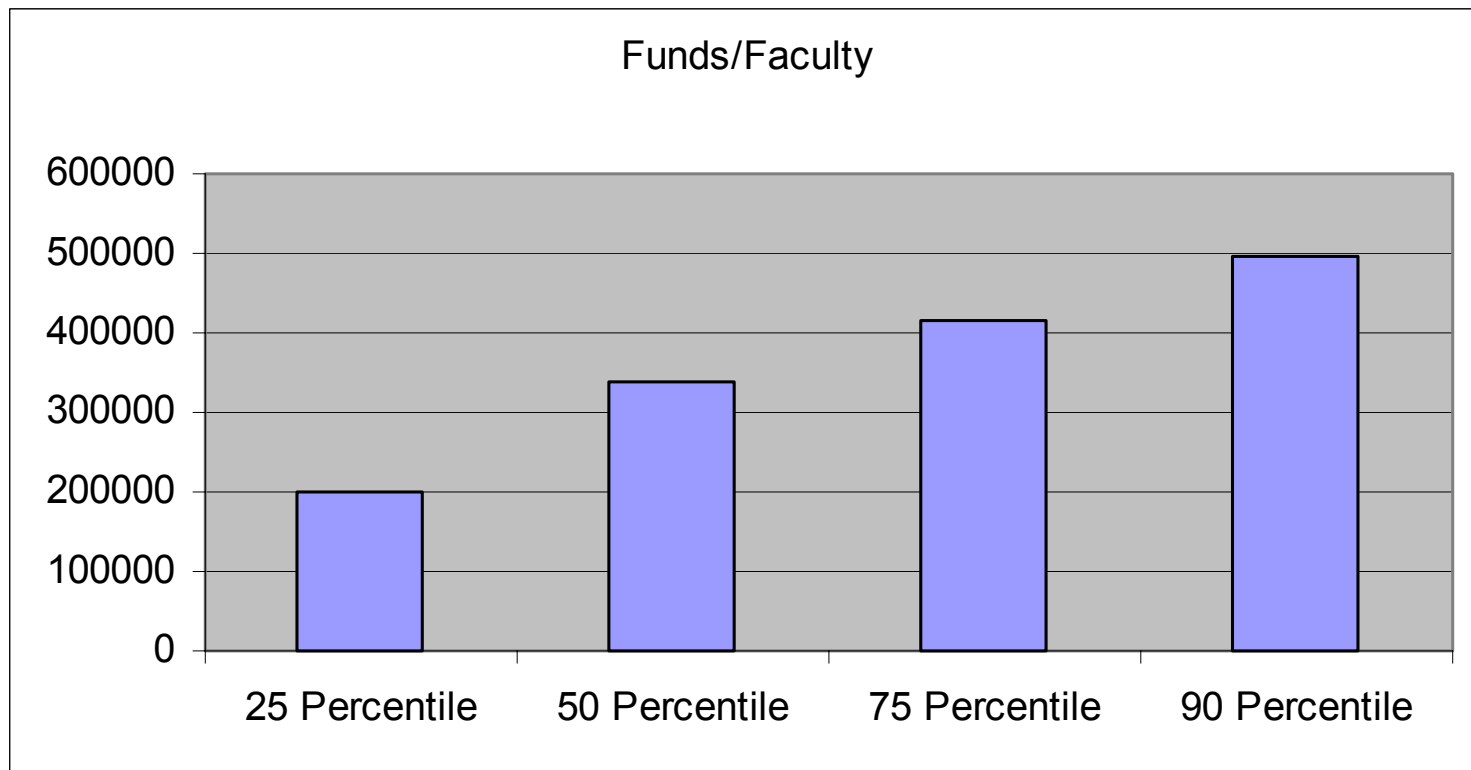




# UMC 2001 Benchmark Data

## Annual Research Budget Per EFT Faculty

Average = \$327,757/EFT Faculty



# UMC 2001 Benchmark Data

## Office and Laboratory Space

Averages per EFT Faculty: Office Space = 518sq. ft. /  
Laboratory Space = 1818sq. ft. / Total Space = 2229sq. ft.

