

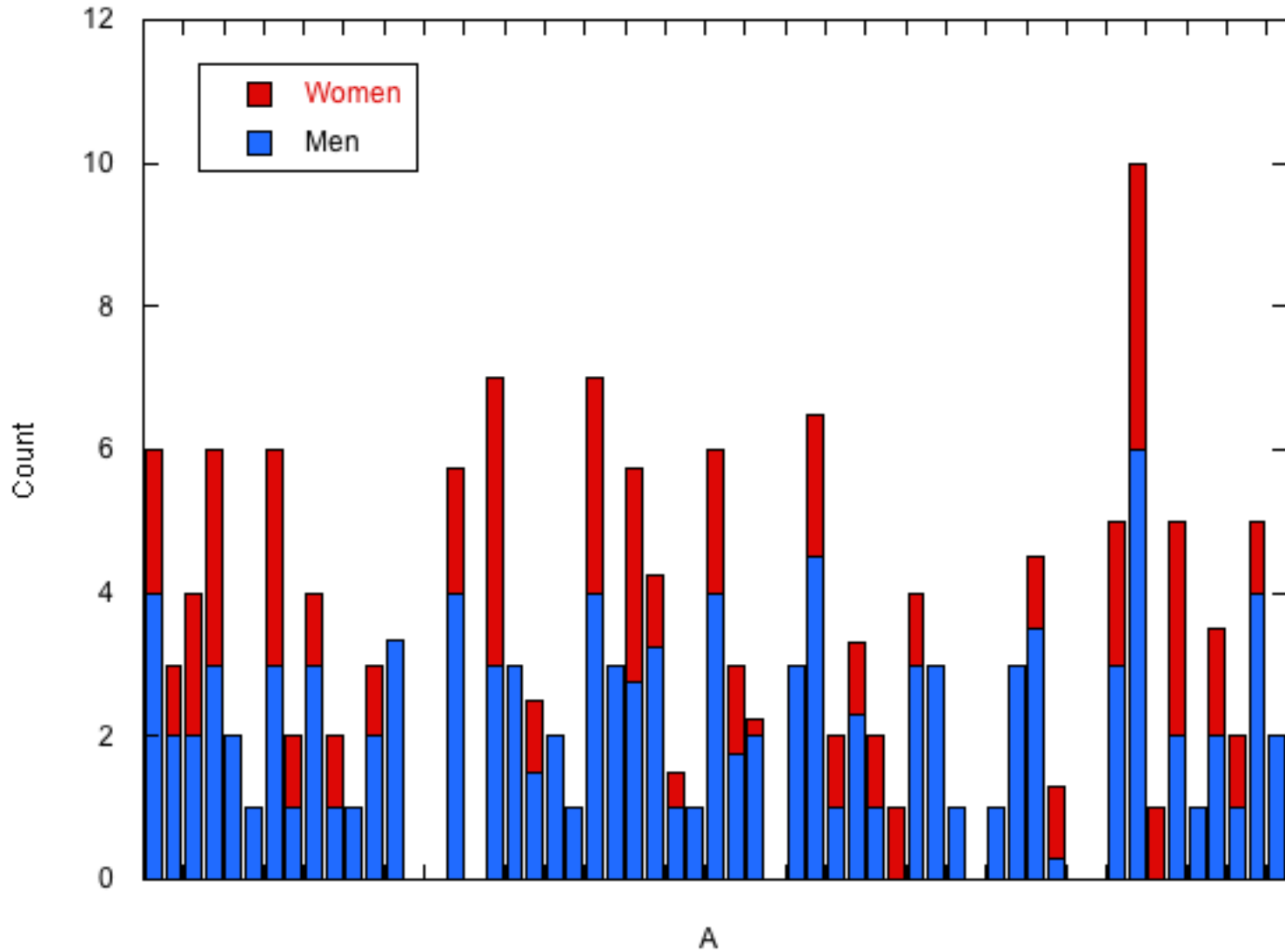
UMC Survey Data

August 2016-July 2017 data
collected Feb. 2018

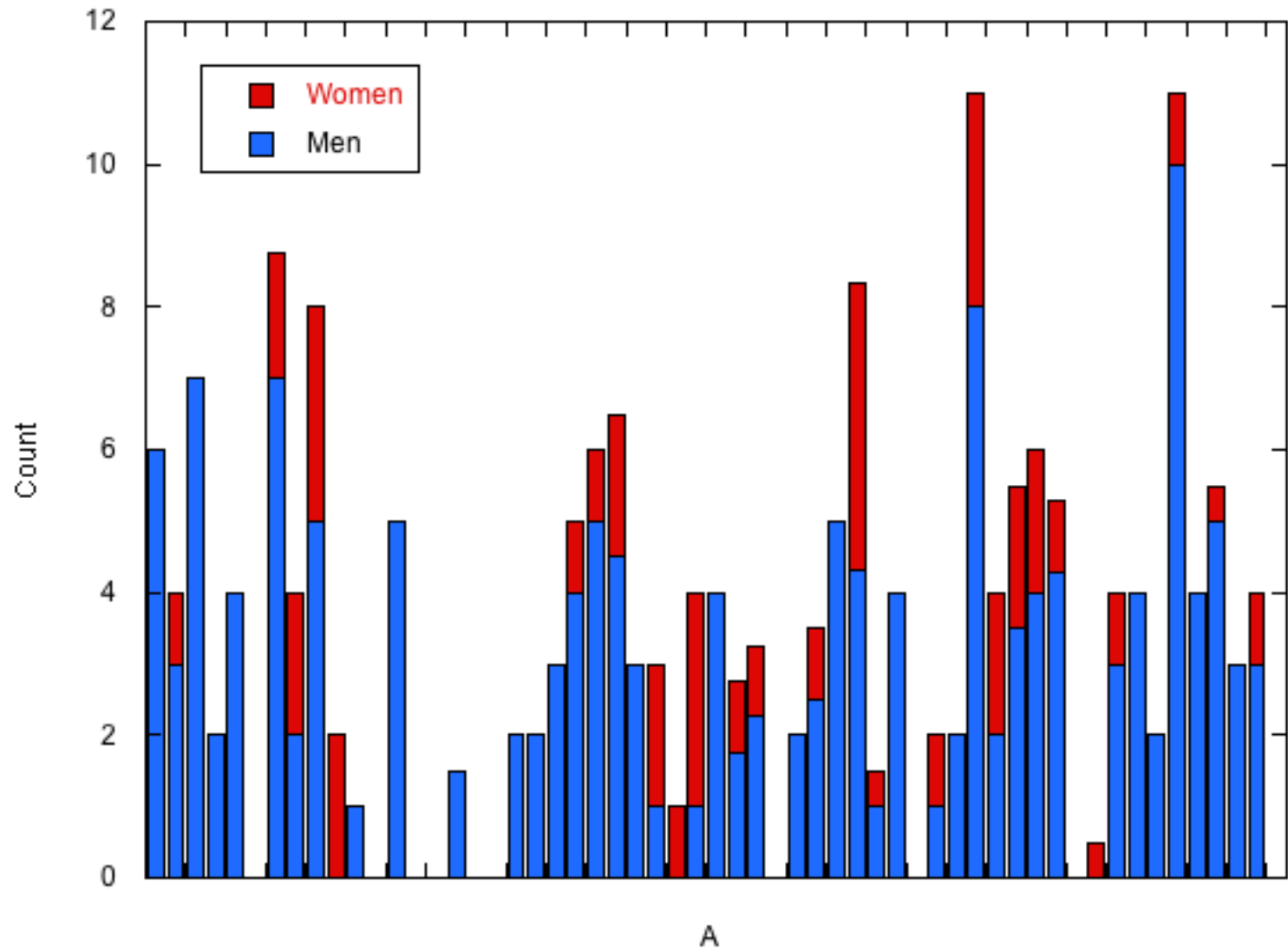
The 2016-17 Data players

1. Arizona State University Technology
2. Auburn University
3. Boise State University
4. Brown University
5. California Polytechnic State University
6. Carnegie Mellon University
7. Case Western Reserve University
8. CLEMSON UNIVERSITY
9. Colorado School of Mines
10. Drexel University
11. Duke University
12. Georgia Institute of Technology
13. Illinois Institute of Technology
14. Iowa State University
15. Johns Hopkins University
16. Massachusetts Institute of Technology
17. McGill University
18. Michigan State University
19. Michigan Tech
20. Missouri University of Science & Technology
21. North Carolina State University
22. Oregon State University
23. Pennsylvania State University
24. Purdue University
25. Rutgers University
26. Stanford University
27. Texas A&M University
28. The Ohio State University
29. The University of Alabama
30. The University of Tennessee
31. The University of Texas at Arlington
32. The University of Texas at Austin
33. University of California Santa Barbara
34. University of California, Irvine
35. University of California, Merced
36. University of Central Florida
37. University of Connecticut
38. University of Delaware
39. University of Florida
40. University of Idaho
41. University of Illinois Urbana Champaign
42. University of Kentucky
43. University of Maryland
44. University of Michigan
45. University of Minnesota
46. University of North Texas
47. University of Pennsylvania
48. University of Texas at Dallas
49. University of Toronto
50. University of Utah
51. University of Virginia
52. University of Washington
53. University Of Wisconsin-Madison
54. University of Wisconsin-Milwaukee
55. Virginia Polytechnic Institute and State University
56. Washington University in St. Louis
57. Worcester Polytechnic Institute

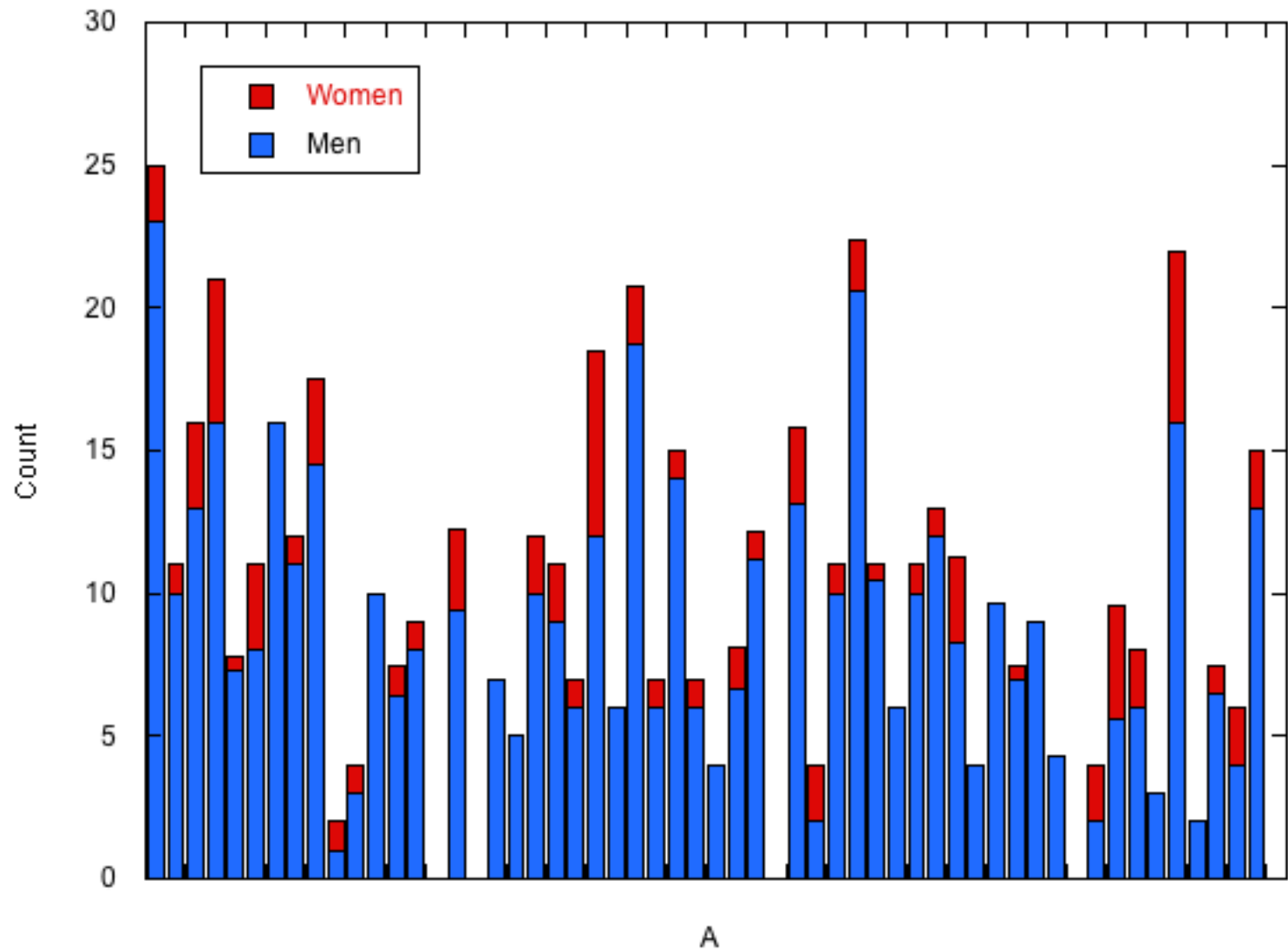
Assistant Profs



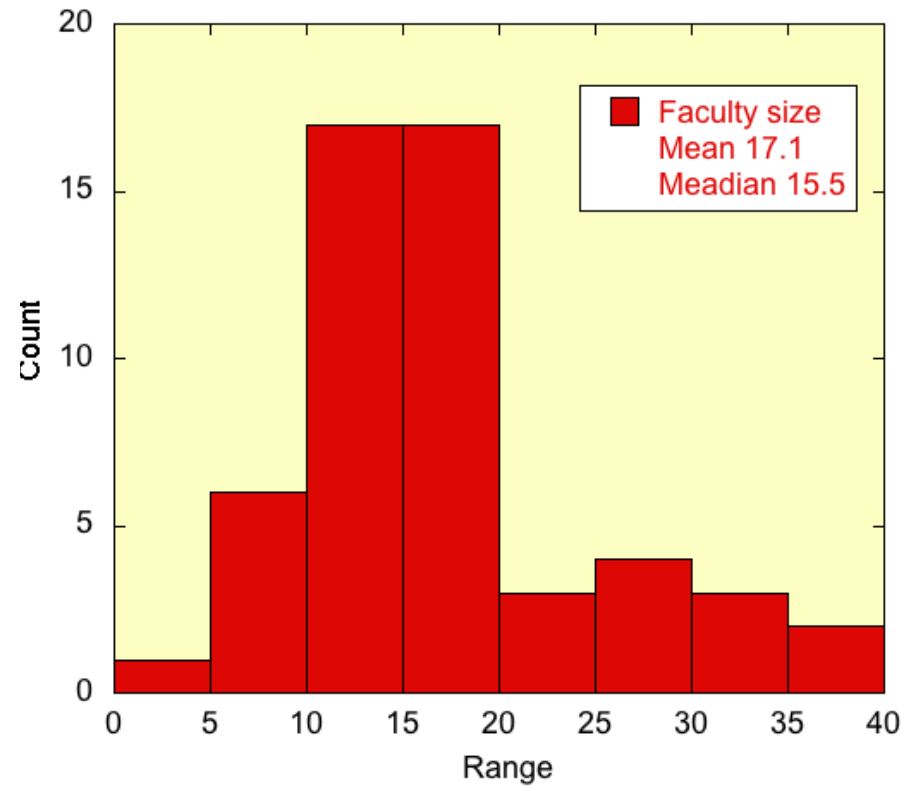
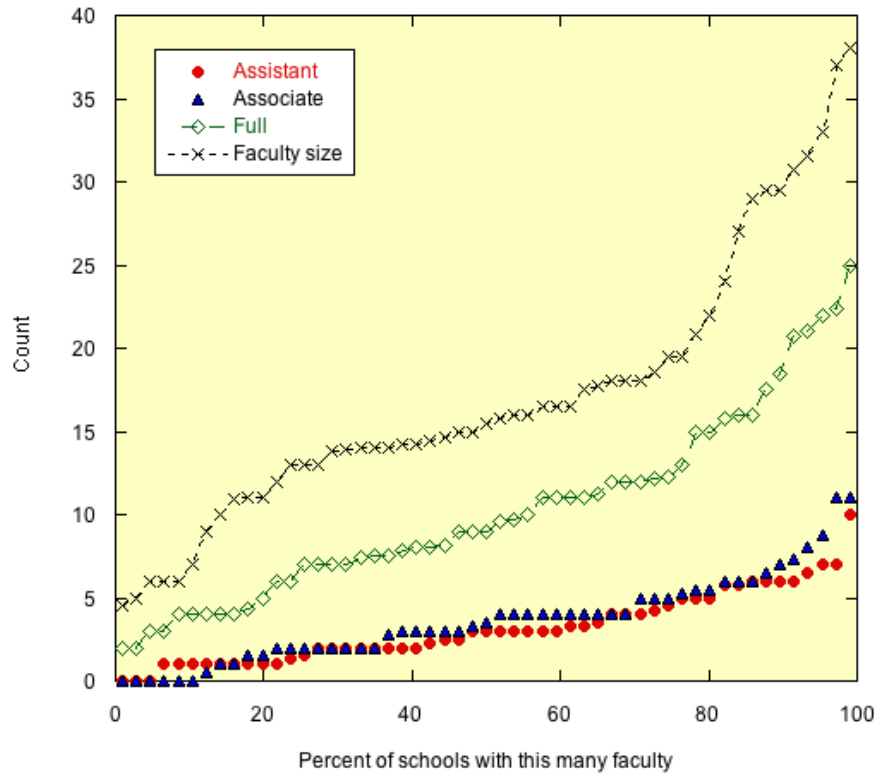
Assoc Profs



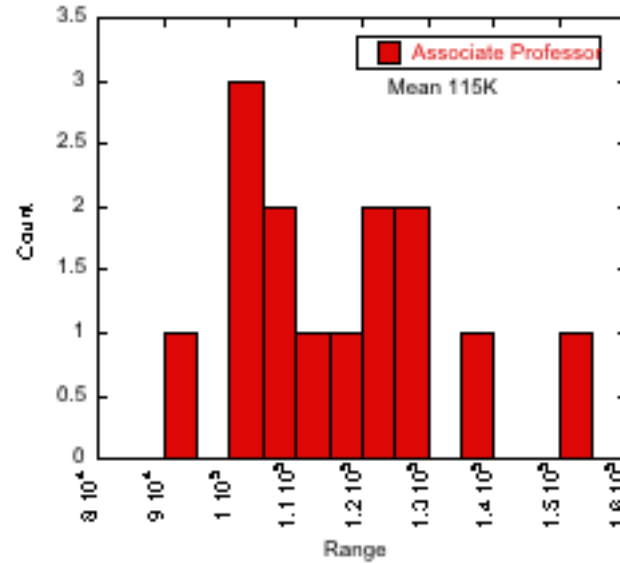
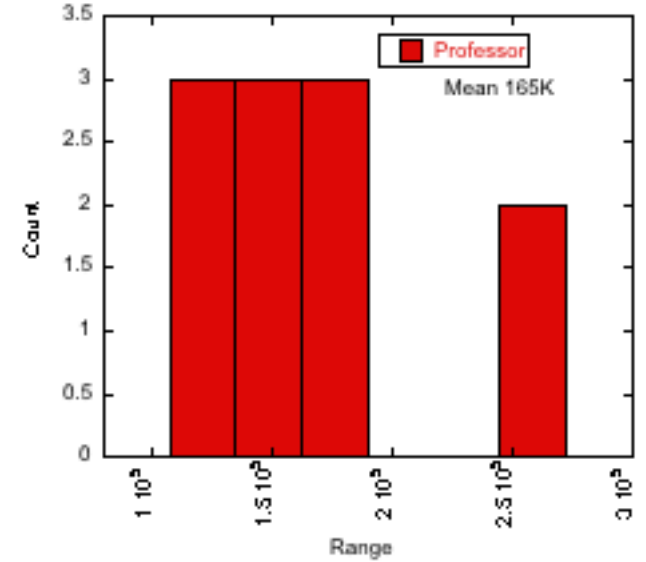
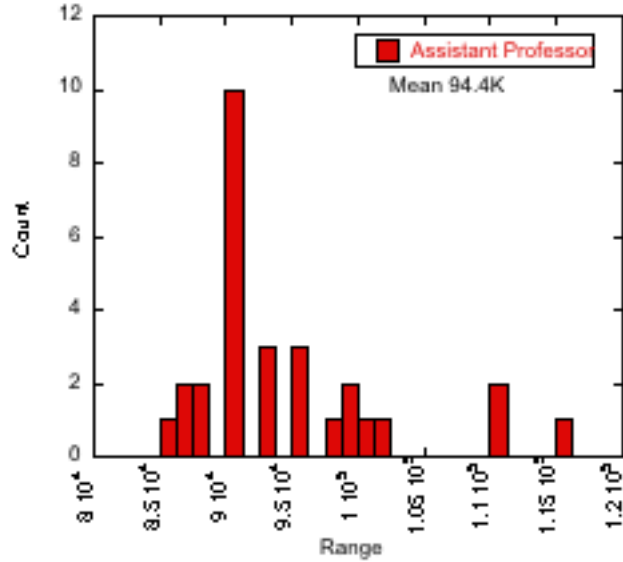
Full Profs



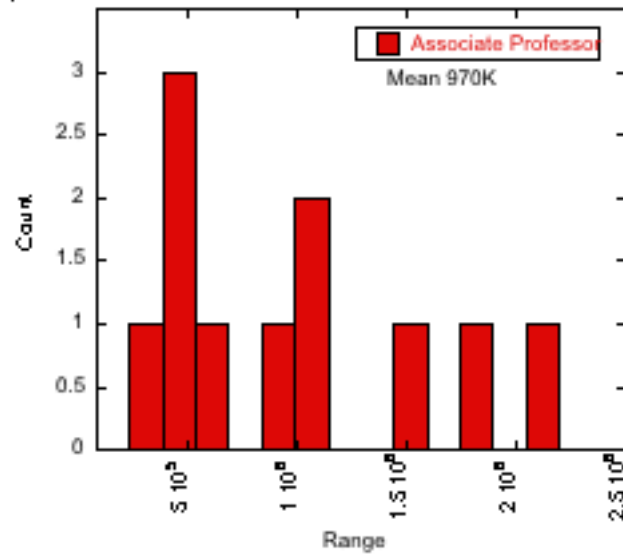
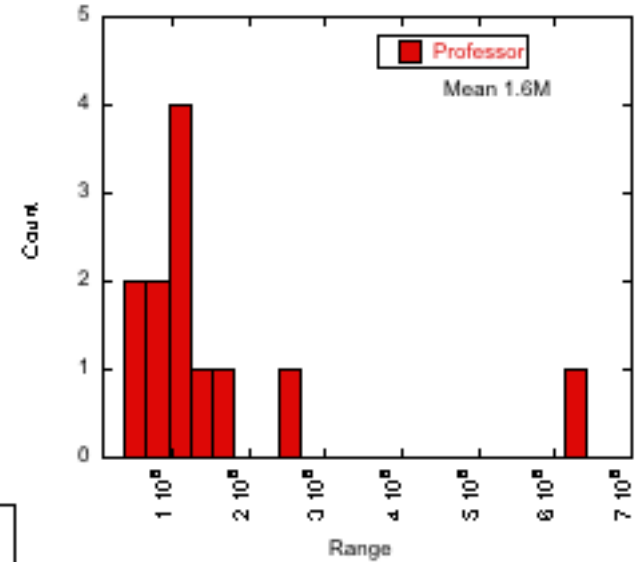
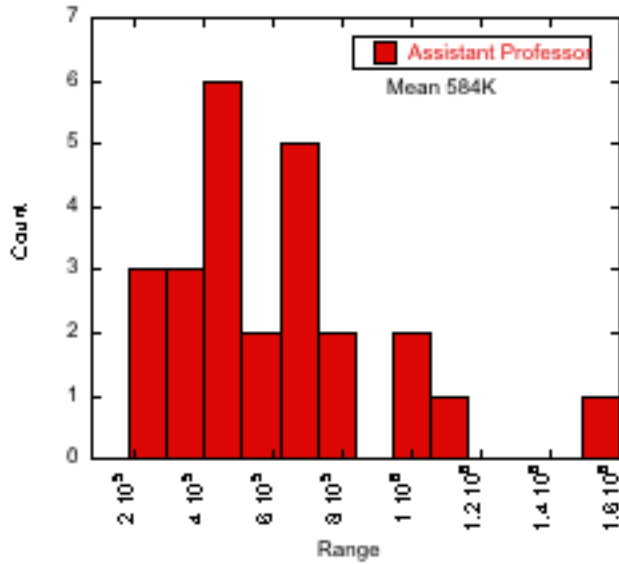
Faculty size



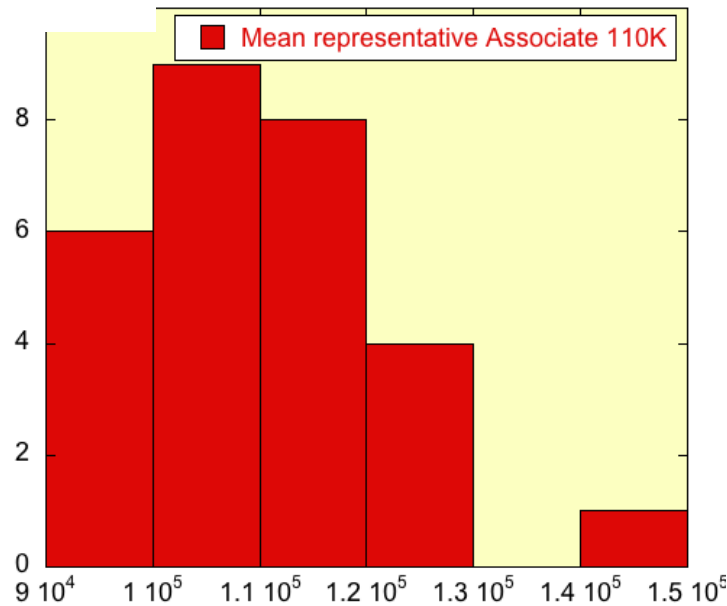
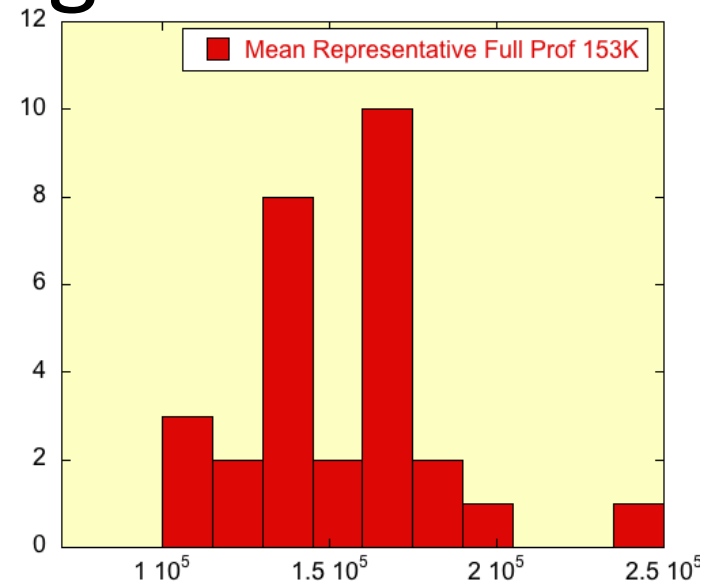
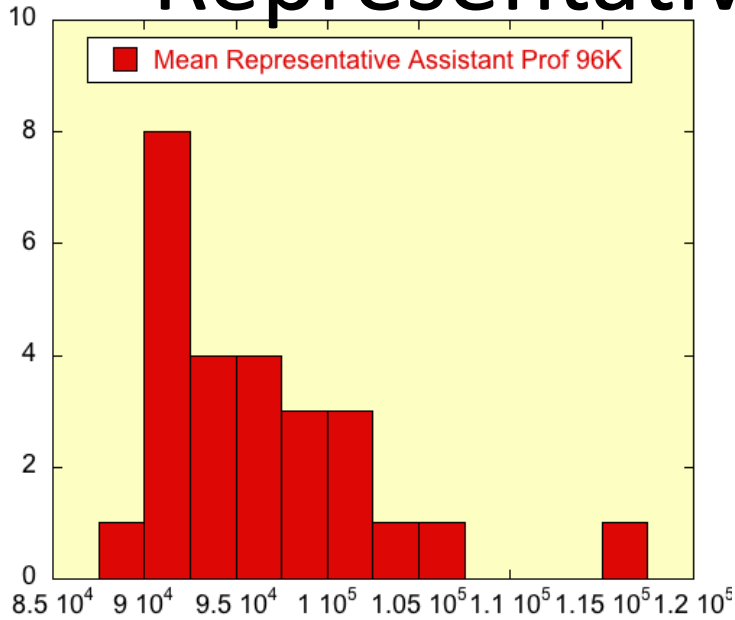
Starting salaries



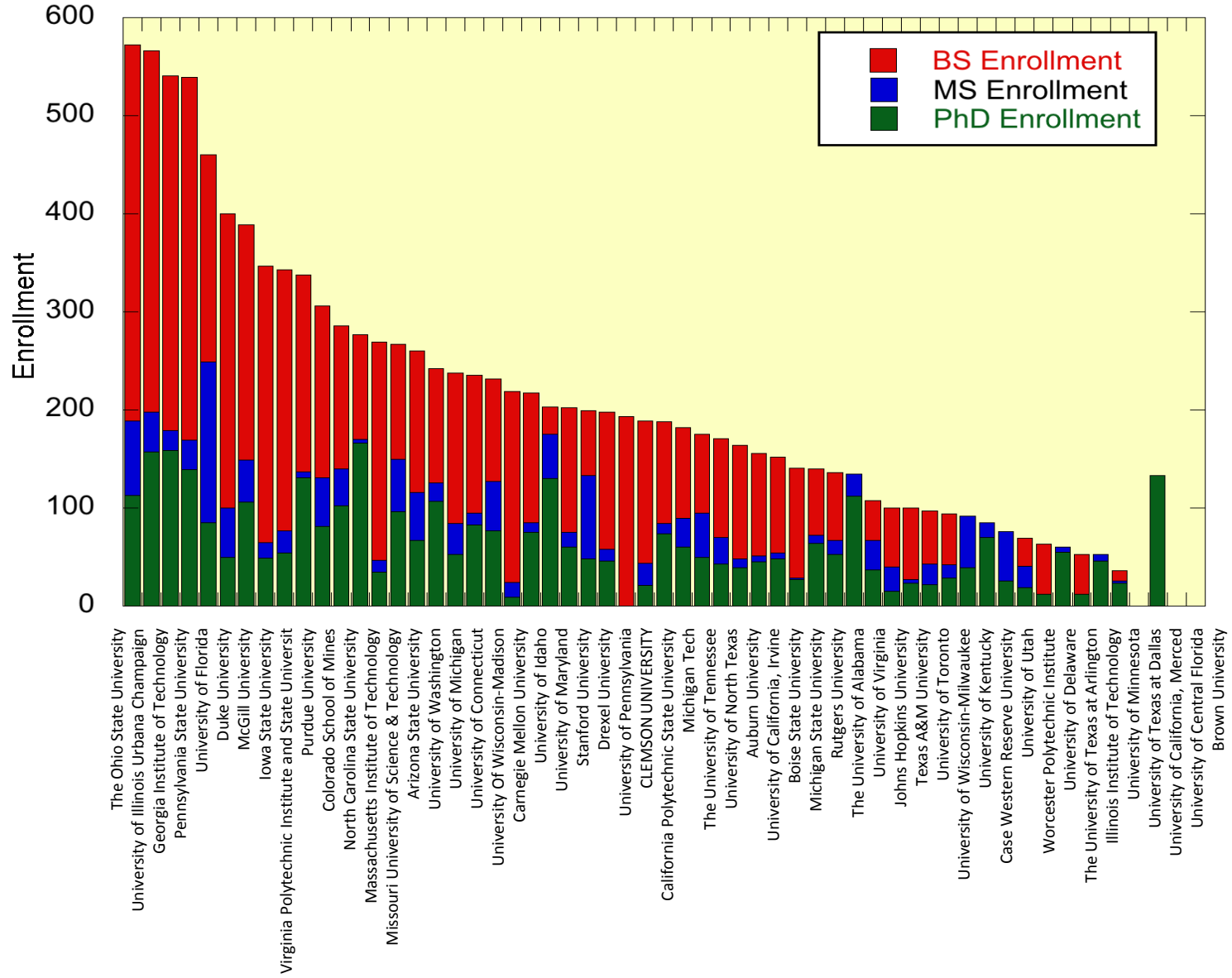
Startup packages



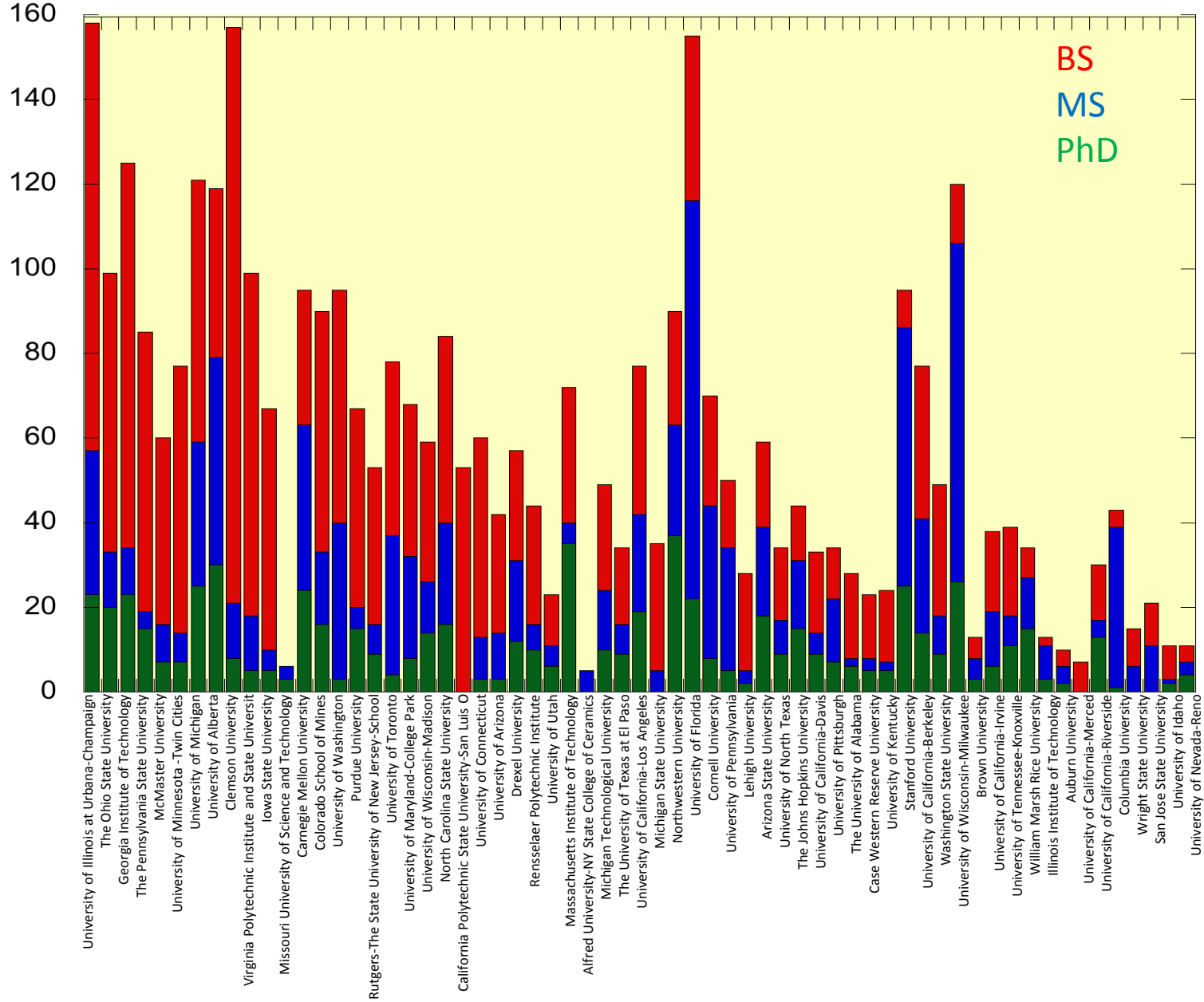
Representative or average 9 month salary



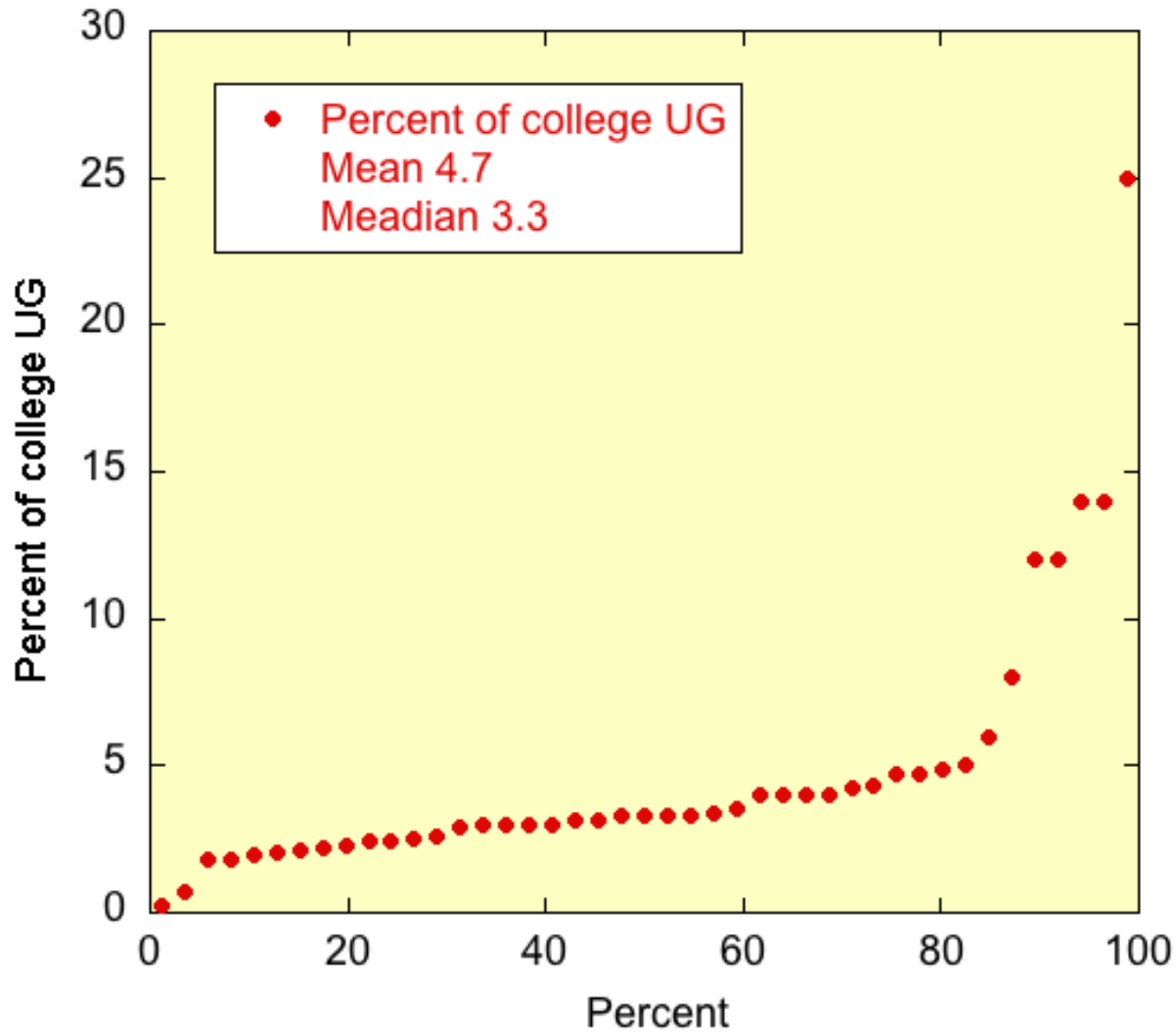
Total student numbers



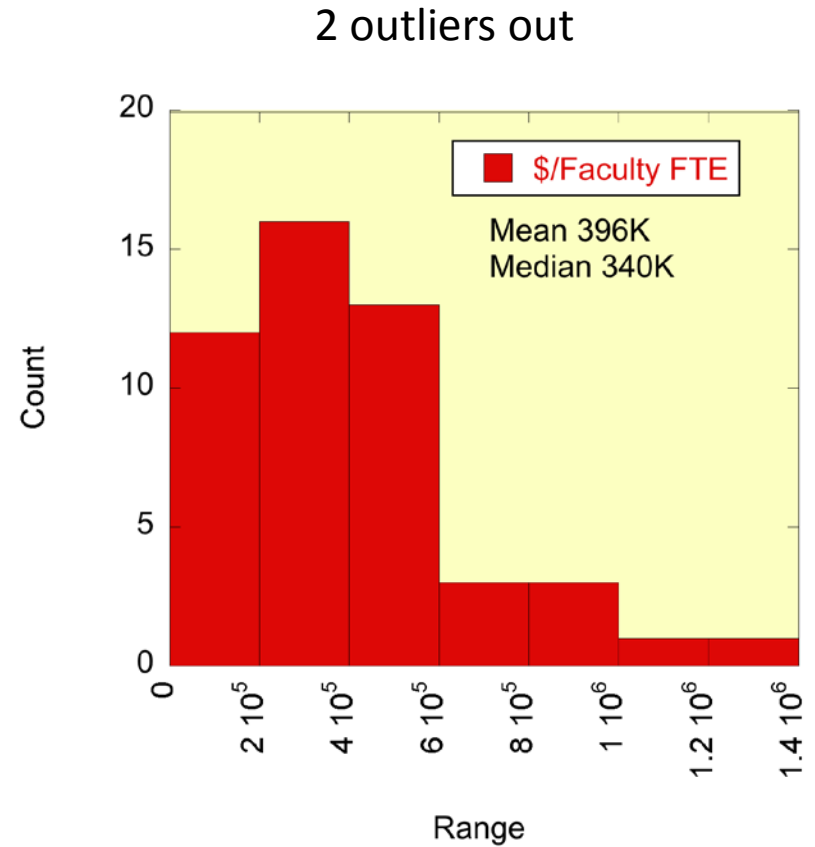
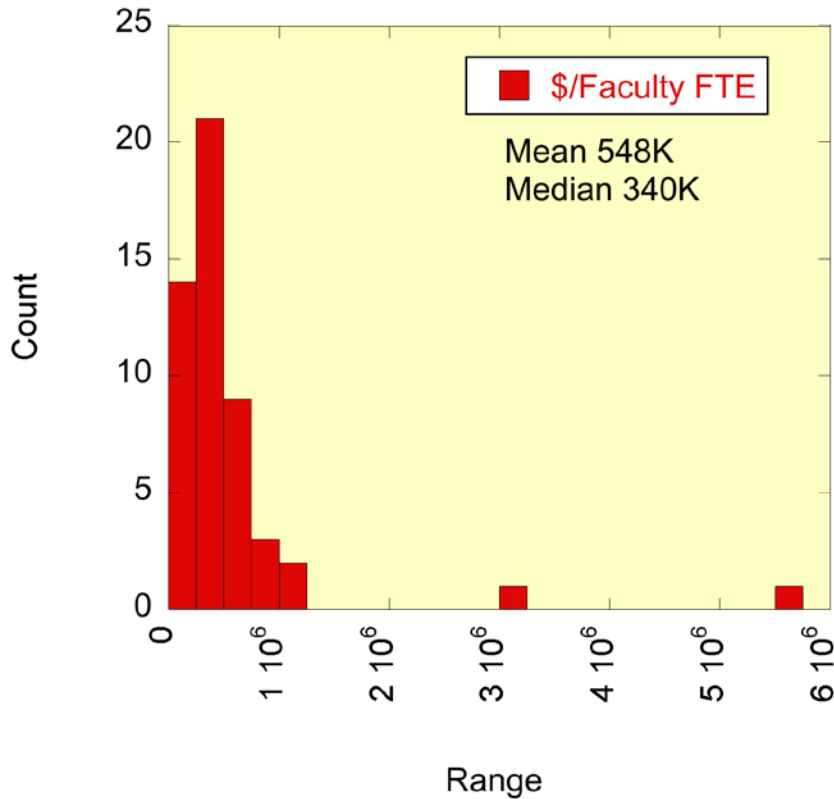
Degrees granted



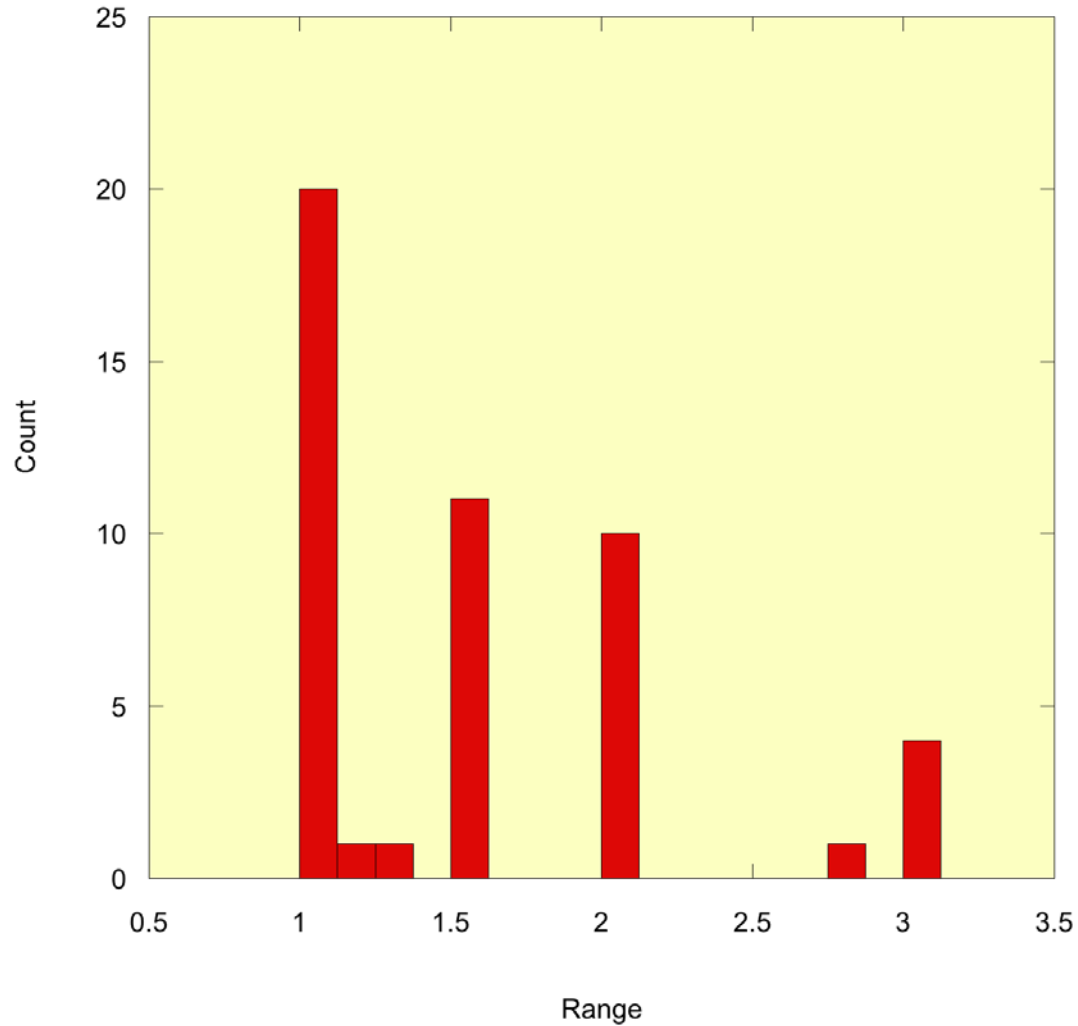
Relative size in college



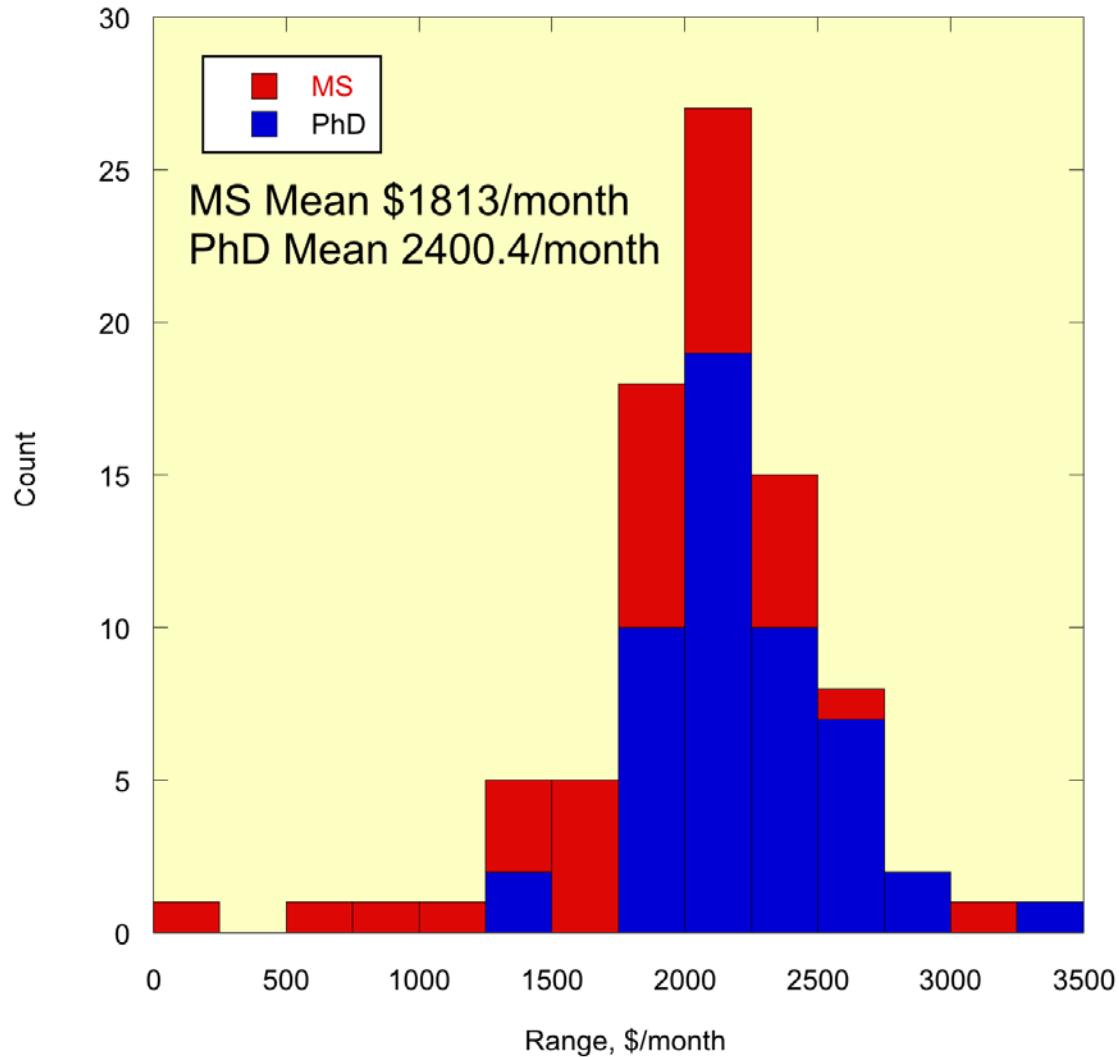
Expenditures/FTE



Teaching load (courses per semester)



Student support



Will be sending out to
participants after this meeting