

# ABET Presentation to University Materials Council

30 November 2009

Michael K J Milligan, PhD, PE  
Executive Director



*Leadership and Quality Assurance in Applied Science,  
Computing, Engineering, and Technology Education*

# Outline

- Introduction and Activities as ED
- ABET Accreditation Activities
- International Engagement
- ABET Governance
- Value of ABET Membership
- Society - Institution - ABET Partnership



# ED Activities

- Executive Director, 1 June 2009
  - Background
- Focus Areas
  - Strengthen Relationships and Communications
    - Member Societies: Executive Directors, BODs
      - » Created new ABET staff position: *Member Relations Coordinator* – Ms Elayna Lambert
    - Volunteers: Commissioners, Program Evaluators
    - Industry: Advisory Council, Partnerships
    - Institutions: Deans, Dept Heads, Advisory Council

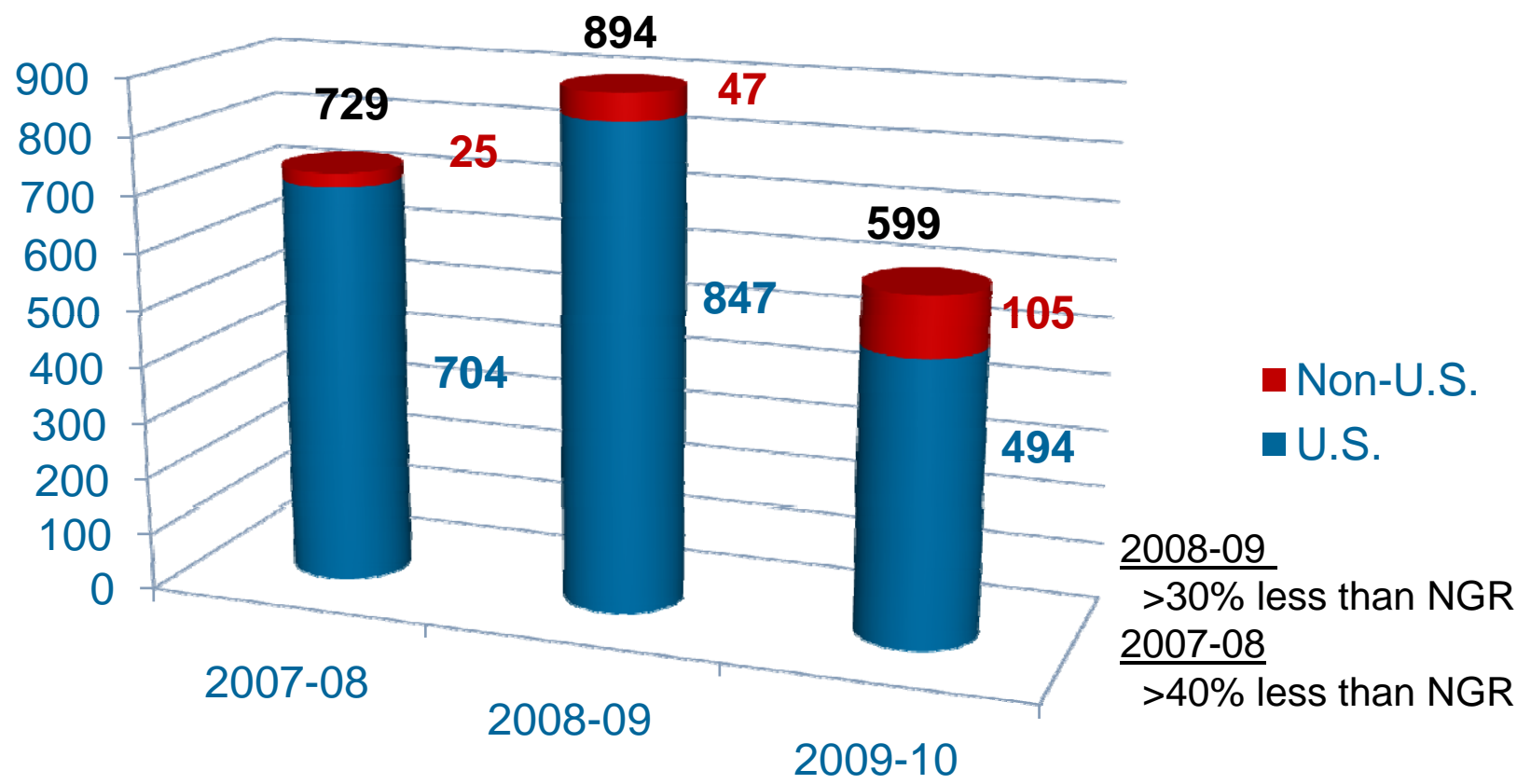


# ED Activities

- Focus Areas (continued)
  - Strategic Planning
    - Value of Accreditation
      - Continuous Quality Improvement (CQI)
    - Relevancy: institutions, public, industry, gov'n't
    - Improve ABET processes
    - Operational plan: support international activities
  - Scientific, Tech, Engineering, Math (STEM)
    - JETS, NSF
    - Pipeline to 2 and 4 year degrees



# ABET Accreditation Activity Program Level



Notes: Variations due to normal cyclic nature of accreditation visits as well as growth of new programs  
All international (non-domestic) activity is included in new growth

**ABET** Leadership and Quality Assurance in Applied Science, Computing, Engineering, and Technology Education

# ABET Accreditation Activity

## Criteria Harmonization

- Goal: common criteria where possible
  - Across 4 commissions (EAC, TAC, CAC, ASAC)
  - Wording and interpretation, where intended meaning is the same
  - Does NOT force commonality where differences are necessary and intentional
- Why Harmonize?
  - To help institutions, ABET volunteers, ABET staff
- Status
  - Activities ongoing, target 2011-12 cycle



# ABET International Activities



*Leadership and Quality Assurance in Applied Science,  
Computing, Engineering, and Technology Education*

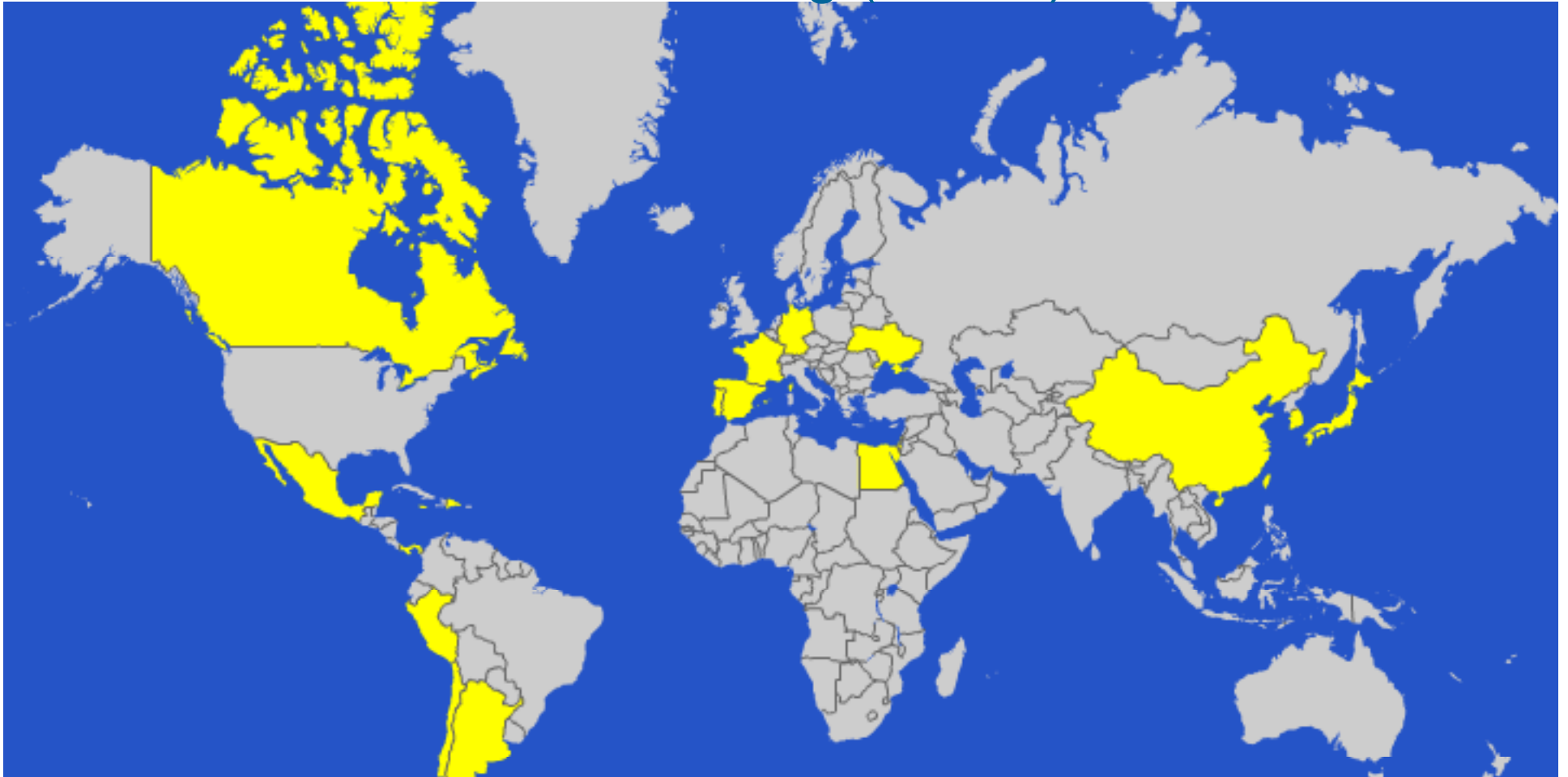
# ABET International Activities

- Letter of Intent
  - Initial step towards full MOU
- Memorandum of Understanding (MOU)
  - Promotes cooperation
  - Collaborate in the professional development of evaluators and faculty
  - Exchange information about best practices in promoting quality assurance
  - Explore feasibility of mutual recognition





# Memoranda of Understanding (MOUs), Letters of Intent<sup>9</sup>



Argentina Egypt Japan Chile *China* Chinese Taipei France Germany Israel  
Peru Spain *Ukraine* Western Hemisphere (Canada & Mexico)  
UNESCO (Latin America & Caribbean) GCREAS (Jamaica, Panama, Dominican Rep)



*Leadership and Quality Assurance in Applied Science,  
Computing, Engineering, and Technology Education*

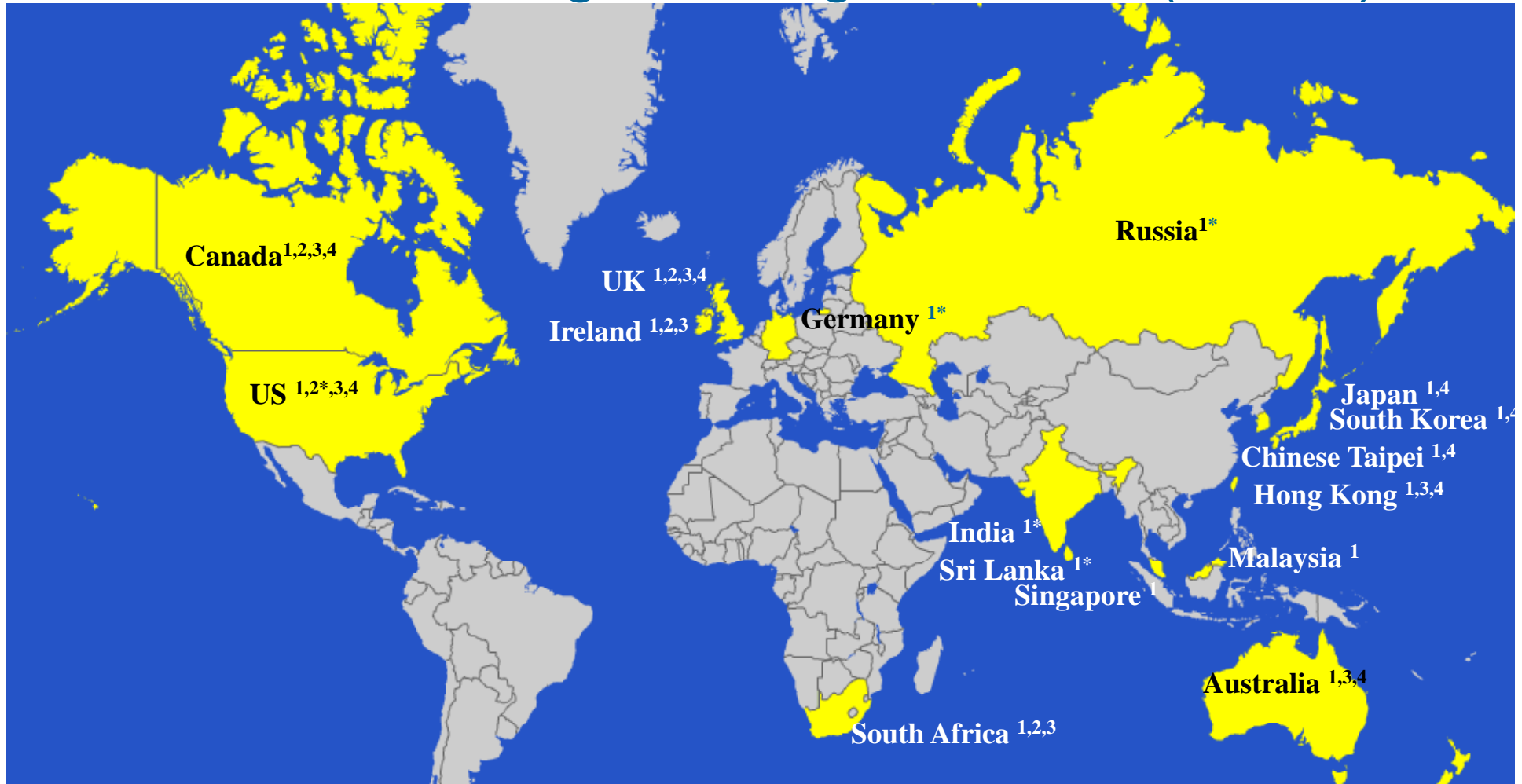
# ABET International Activities

## Mutual Recognition Agreement (MRA)

- *Accreditation systems* substantially equivalent
  - Comparable criteria, policies, procedures
  - Comparable educational experiences
  - Graduates have similar competencies
- Accreditation decisions rendered by one signatory are acceptable by all signatories
- Mobility
  - Graduates of accredited programs accorded same recognition to practice profession at the entry level



# Mutual Recognition Agreements (MRAs)



1: Washington Accord (Engineering)

2: Dublin Accord (Technicians)

3: Sydney Accord (Technologists)

4: Seoul Accord (Computing)

\* Provisional



*Leadership and Quality Assurance in Applied Science,  
Computing, Engineering, and Technology Education*

# ABET International Activities

## Substantial Equivalency

- Programs
  - Comparable in educational outcomes, but may differ in format or method of delivery
- Substantial equivalency is **not** accreditation
  - Not binding on colleges, universities, employers, or licensing agencies
- No longer offered
  - Last evaluation in 2006
  - NGRs expire in 2012



*Leadership and Quality Assurance in Applied Science,  
Computing, Engineering, and Technology Education*

# ABET Substantially Equivalent Programs



Mexico  
Turkey

Qatar  
Peru

Spain  
Singapore

Oman  
UAE

Russia



*Leadership and Quality Assurance in Applied Science,  
Computing, Engineering, and Technology Education*

# ABET International Activities

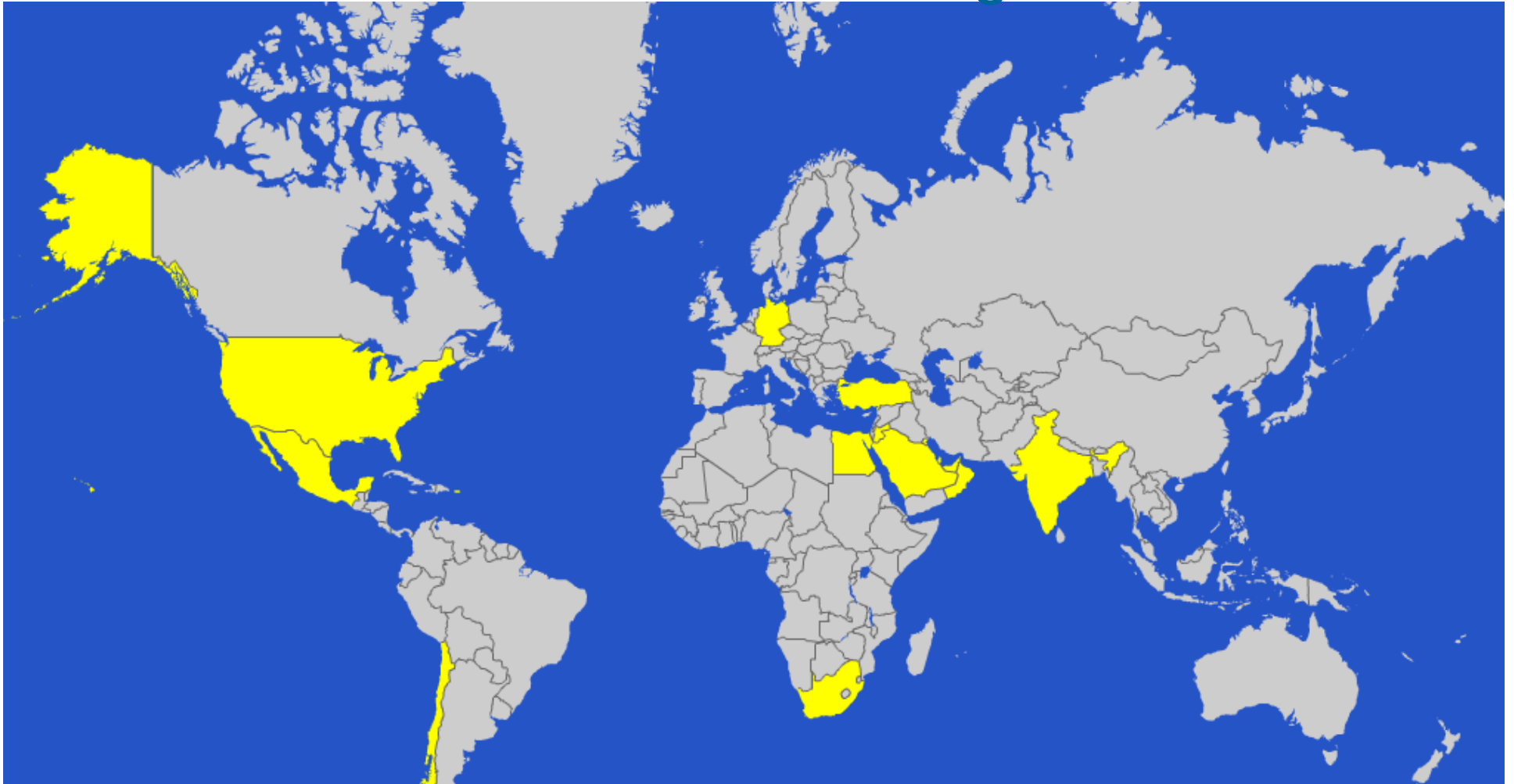
## Direct Accreditation

- Accreditation outside the US
  - Approved unanimously by ABET Board of Directors during Fall 2005 BOD meeting
  - Honor existing MOUs, MRAs
  - Phase out substantial equivalency
- Programs visited outside US
  - 2007-08: 25
  - 2008-09: 47
  - 2009-10: 105



*Leadership and Quality Assurance in Applied Science,  
Computing, Engineering, and Technology Education*

# ABET Accredited Programs



Bahrain

Chile

Egypt

Germany

India

Jordan

Kuwait

Mexico

Oman

UAE

Qatar

Saudi Arabia

South Africa

Turkey

USA



*Leadership and Quality Assurance in Applied Science,  
Computing, Engineering, and Technology Education*

# ABET Governance

## How is ABET Structured?

- ABET is a **federation** of 30 professional engineering & technical societies
- Neither institutions nor individuals are members of ABET
- ABET relies on the services of 1500+ volunteers and 31 full-time, 5 part-time staff



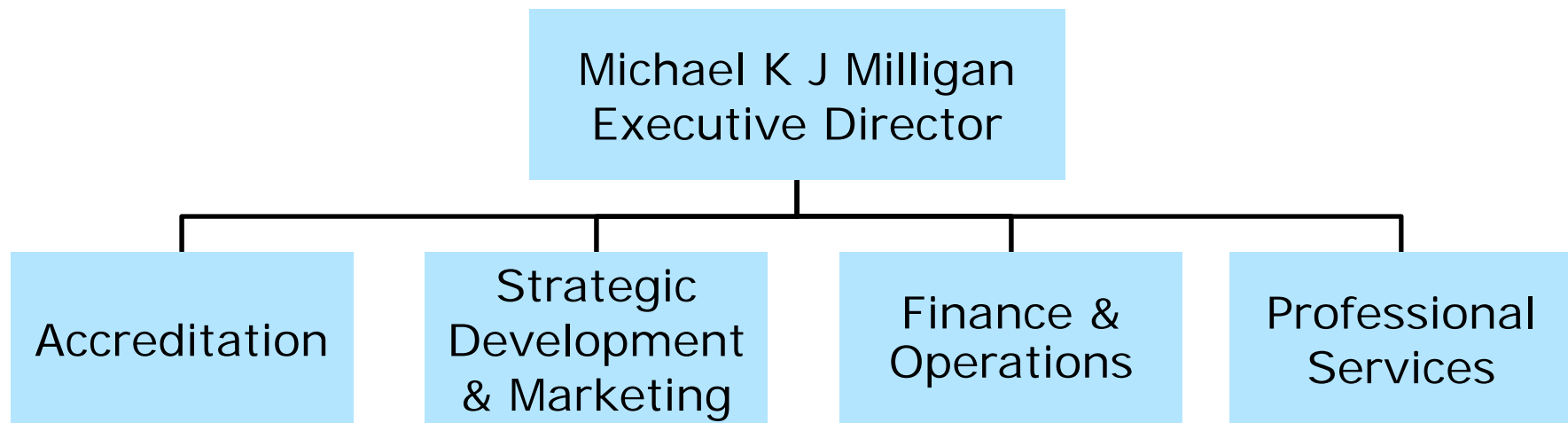


# ABET Governance

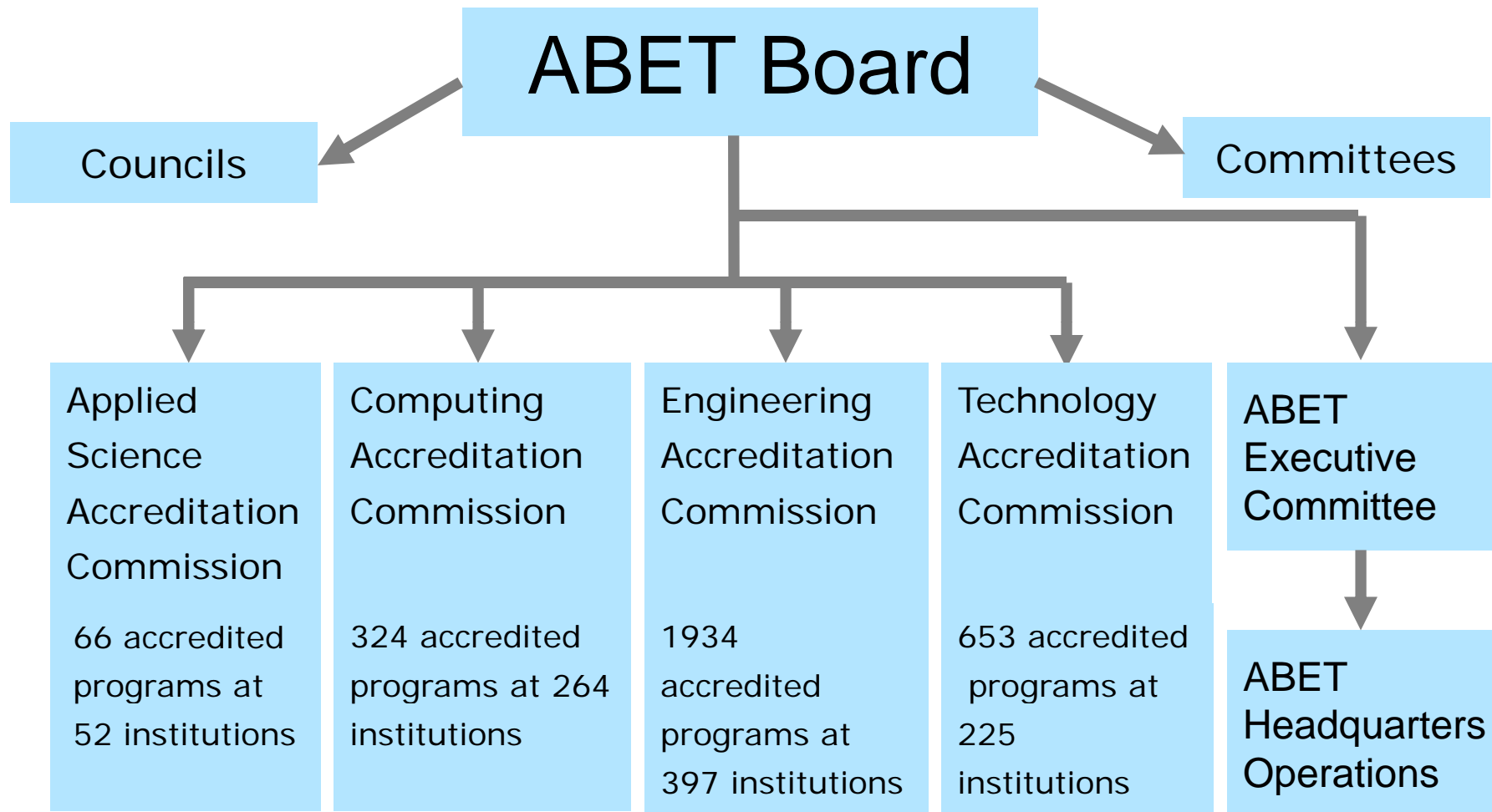
## ABET Headquarters

111 Market Place, Ste. 1050  
Baltimore, MD 21202-4012

**31 Full time staff / 5 Part-time staff**



# ABET Governance



# ABET Governance

## Board of Directors

- 48 Total Members
- 5 Officers
  - President, President-Elect, Past President, Secretary, Treasurer
  - One-year terms, except for Treasurer: 2 years
- 37 Directors
  - 1 to 3 Directors per member society
    - Based on number of programs
  - 3-year term, renewable for additional term



# ABET Governance

## Board of Directors

- 5 Public Directors
  - Right to vote
  - No affiliation with member societies or their disciplines
  - 3-year term, renewable for additional term
- 1 Associate Member Representative
  - Privilege of the floor, but no vote



# ABET Governance

## Thoughts on Current Board Structure

- “Small societies don’t have a voice”
- Fact: the largest 6 societies have approximately 35% of the total vote, but they represent over 63% of programs
- Number of “small societies” is a majority of overall membership



# ABET Governance

## Board Identified Strategic Issues

- The viability of ABET's governing structure and revenue assumptions are challenged by Member Societies who are finding it more difficult to justify the value they receive from ABET relative to the cost of participation



# ABET Governance

## Board Identified Strategic Issues

- A governing structure based on discipline-specific societies may become less viable as:
  - Growing bodies of knowledge generate an expanding number of disciplines with increasingly blurred distinctions (overlapping content)
  - A growing number of graduates find work in areas not addressed by the societies
  - Membership in historic technical societies decreases



# Value of ABET Membership

- Provides internationally recognized process for verifying quality of education programs
  - Verifies educational experience
  - Verifies standards (program criteria) are met
  - Establishes a baseline for program quality
  - Ensures Continuous Quality Improvement (CQI) processes are integrated into academic programs





# Value of ABET Membership

- Criteria developed by profession
  - Outcomes-based criteria help ensure graduates have specific types of skills, knowledge
- Dual-level Accreditation (BS and MS)
  - Verifies quality of programs at multiple levels



# Value of ABET Membership

- International Accreditation
  - Increases global presence, influence of societies
    - Recognition of international leadership in profession
    - Set expectations for characteristics of graduates entering profession
  - Supports growth of global industry



*Leadership and Quality Assurance in Applied Science,  
Computing, Engineering, and Technology Education*

# Society - Institution - ABET Partnership

- We share common goals
  - Ensure qualified individuals enter the profession
  - Ensure academic programs incorporate quality
    - Continuous Quality Improvement (CQI)
    - Accreditation = Verification
- Societies provide ABET leadership
  - ABET Board of Directors
  - Accreditation Commissions, Program Evaluators
    - Many from academe



*Leadership and Quality Assurance in Applied Science,  
Computing, Engineering, and Technology Education*

# Society - Institution - ABET Partnership

- Encourage ABET participation
  - Program evaluators, commissioners
  - Appreciate value of CQI and assessment tools
- Academic Advisory Council
  - Provide voice and advise ABET directly
- Grow interest in technical education
  - Increase awareness, relevancy of profession
- Grow global opportunities
- Grow participation and support from industry



*Leadership and Quality Assurance in Applied Science,  
Computing, Engineering, and Technology Education*

**Please contact me if you have  
any questions or concerns:**

**executive-director@abet.org  
410-347-7700**



*Leadership and Quality Assurance in Applied Science,  
Computing, Engineering, and Technology Education*